



THE END

EIGHTH BIENNIAL CONFERENCE

March 14-16, 2024 | Pasadena, California

C19

The Society of
Nineteenth-Century
Americanists

C19
The Society of
Nineteenth-Century
Americanists

Cover: “End of the World, October 22, 1844.”
Courtesy of the Adventist Digital Library.

Contents

3 Welcome from the Site Committee

4 Program

5 Acknowledgements

6 Conference Information

10 Sample Itineraries

14 Special Events

16 Hotel/Meeting Room Floor Plans

SEMINARS

19 Thursday March 14

22 Friday March 15

26 Saturday March 16

PANELS

28 Thursday March 14

42 Friday March 15

48 Saturday March 16

60 Index of Participants

C19:
The Society of Nineteenth-
Century Americanists

Eighth Biennial Conference
THE END

March 14–16, 2024
Pasadena, California

Land Acknowledgement

The Gabrielino/Tongva peoples are the traditional land caretakers of Tovaangar (the Los Angeles basin and South Channel Islands). We pay our respects to Tongva ancestors, elders, and relations past, present, and emerging. We encourage you to acknowledge the Indigenous, First Nations, and Native peoples who have stewarded lands on which our institutions sit and throughout the Americas and other parts of the world.

This conference is being supported through generous contributions
from the following institutions:

University of California, Santa Cruz
University of California, Irvine
Pomona College
California State University, Los Angeles
University of Southern California
William L. Clements Library, University of Michigan

Welcome from the Site Committee

Is Los Angeles the end? There’s no doubt that the city sometimes loves to play itself as a terminus, a pinnacle, an apocalypse-in-action. From *Blade Runner* to *The Terminator* to the appropriately-named recent comedy *This is The End*, movie-goers have witnessed Los Angeles’s spectacular capacity to crash and burn. That’s before we get to the all-too-real media footage — fires, floods, brutal violence. The city has become, in fiction and fact, a story through which all of America imagines a looming future and the strength it might take to face it.

Los Angeles may indeed become the crucible in which our current world order plays itself out. If so, that’s good news: Los Angeles’s apocalypses have often yielded impressive rebirths. The last decades have seen repeated progressive turnarounds begin in the Los Angeles ash. Worry about the city’s smog helped lead to California’s Clean Air Act and our national leadership in environmental regulation. The initial approval of Proposition 8, a ballot initiative legislating against marriage equality, reanimated Los Angeles’s long activist tradition of advocating for LGBTQ rights. The aftermath of the 1992 anti-police civil unrest and the backlash to 1994’s racist, anti-immigrant Prop 187 gave rise to cross-pollination between new immigrants, policy experts, and the labor movement. This coalition yielded transformative templates: Los Angeles was a starting point for the nation-wide movement toward living wage policies, and Los Angeles immigrants helped spearhead labor’s return to immigration advocacy. This shift helped nurture new life into the labor movement: those of us with faculty and graduate student labor unions owe partial thanks to Los Angeles’s coalitional history. Post 2020, tremendous voter commitment has moved resources away from jails and towards racial justice and harm-reduction initiatives. Over the last 15 years especially, we can recognize California — as the LA-based sociologist Manuel Pastor has described it — as “America, only sooner.”

When we look back through the nineteenth-century, Los Angeles becomes even more visible as a place where people, resources, and ideas, move and transform. A traditional home of the Tongva people, the spectacular natural landscape of what’s now called Los Angeles has been claimed by religious missionaries; by the Spanish, Mexican, and US governments. Some of these forces moved from East to West, and saw California as an American endpoint. But to those on other geographic, political, and creative trajectories, California has mattered differently. If Los Angeles has been an end, it’s just as often a beginning: increasingly, it’s a center.

The Site Committee is thrilled to welcome C19 to the city we love. This program contains recommendations for itineraries heading out from the conference hotel. We offer these suggestions with the belief that if Los Angeles, to take Walt Whitman’s words, represents the “yet unfound,” that’s partly because the searcher doesn’t know where or how to look — and also because there’s no end to all we might see.

C19 Site Committee:

Virginia Jackson, Maria Karafilis, Marissa López, Sarah Mesle

Program

This year’s conference theme, “The End,” speaks to a contradiction many C19 members will find familiar. On the one hand, we are facing catastrophes everywhere we turn: political, ecological, professional, and more. On the other hand, the aspects of our world we *want* to end have never seemed so intractable. Often this situation feels like a defining condition of the present, but the panels this year shake that sense of historical singularity by showing us the many ends of the past. They interpret the end as defeat and as purpose, as formal convention and as geographic boundary, as extinction and as remainder. They also interrogate the very idea of finality and offer compelling alternative formulations. It’s all too clear how much the nineteenth century resonates with the present; the panels this year also demonstrate the resources our scholarship gives us to confront that present.

The 2024 Program Committee has been eager to continue making the conference a place where nineteenth-century Americanists not only present their work but actively think together. In response to members’ enthusiasm for the seminars, we have expanded the number offered this year, and we are grateful to the seminar leaders for building these intellectual communities. We’re also excited to introduce two lunchtime workshops, one on pedagogy and curriculum design and one on academic labor organizing. Many thanks to the workshop organizers for sharing their expertise and facilitating such important conversations. We hope you’ll also check out the special events planned this year, including the Scholars of Color Luncheon, the G19 Mixer, the Cluster Lunches, and the incredible array of activities the Site Committee has planned to help you get to know Pasadena and Los Angeles.

Thank you to my colleagues on the Program Committee, Holly Jackson, Jess Libow, and Caroline Yang, who are fonts of ideas and paragons of generosity. Finally, thank you to all the members of C19: it is your brilliant work that makes us look forward to this conference so much every two years.

Lara Langer Cohen

Program Committee Chair

Acknowledgements

My deepest gratitude goes to this organization for providing a meaningful intellectual community over the years. C19 was born following a 2008 conversation around a dinner table among friends who imagined this society; our colleagues at Penn State followed up with much of the work to establish the organization. In the years since that dinner, C19 has grown into a thriving organization with hundreds of members, an outstanding journal, a lively podcast, and invigorating conferences every two years. We oversee a travel fund, a conference-paper award for early career scholars, numerous interest clusters, an early career mentoring program, zoom presentations and panels, and many other activities. Having been in touch this year with the many volunteers who chair committees or provide the labor to run these programs has given me a deep appreciation for the many who care for C19. A new generation is becoming increasingly involved, and in some cases these leaders are among those who have the least amount of time to devote to professional service. We should be particularly grateful to members who have donated their labor before tenure or even before locating secure employment. It is possible that in the near future our Executive Committee will have to consider ways to make the service easier on those who devote their time — perhaps by hiring a part-time coordinator or some other change to the organizational structure. My recommendation is that a conversation take place about this issue, but that will be up to new leadership.

I have been involved in C19 in various capacities since its inception, and it has been personally rewarding to work with Karen Sánchez-Eppler, Dana Luciano, Britt Rusert, Sarah Chinn, Chris Castiglia, Brigitte Fielder, Hester Blum, Jesse Alemán and many others! Former presidents Edlie Wong and Elisa Tamarkin have been extremely helpful in sharing their wisdom. Thanks to the Executive Committee for the tremendous work done in preparation for this conference, especially Lara Langer Cohen, who put in a lot of hours as program chair. Travis Foster kept our communications amazingly smooth and also offered creative approaches to various challenges. Matt Suazo took good care of our membership rolls and the travel fund. Jennifer James brought back the Early Career Connections program, which is part of this conference. And special gratitude to Magdalena Zapędowska and Crystal Donkor for their insight and working with the Ad Hoc Committee on Events. The Site Committee shared its love of LA, and our gratitude goes to Maria Karafilis, Marissa López, Virginia Jackson, and Sarah Mesle for organizing the local activities and reaching out to university sponsors. As always, Paul Erickson continues to be a stalwart with his work as treasurer. If you have a chance, please show your love and gratitude to all of the officers, chairs, and committee members listed in this program.

C19 has become a site where we can share research, build friendships, and continue conversations from one conference to another, and I hope it will continue to offer that type of opportunity. As I step away to focus on other commitments, I wish the best to those who will carry C19 into the future. Con mucho cariño,

Rodrigo Lazo

President, C19

Conference Information

REGISTRATION

Front of Madera (Level 1)

Thursday: 8:00 AM – 6:00 PM

Friday: 8:00 AM – 6:00 PM

Saturday: 8:00 AM – 6:00 PM

BOOK EXHIBIT

San Gabriel Foyer

Thursday: 10:00 AM – 5:00 PM

Friday: 9:00 AM – 5:00 PM

Saturday: 9:00 AM – 2:00 PM

WIRELESS NETWORK

westin_lobby (no password)

WEBSITE

c19theend.com

TWITTER

#24C19

C19 Rising Scholar Prize

C19 is happy to announce that we will once again award a Rising Scholar Prize, which will recognize the top paper presented at the 2024 conference by a member in the early stages of a career. The winner will be listed on the C19 website and awarded an honorarium of \$250.

Eligibility: We welcome submissions from members presenting at the conference who are either masters or doctoral students or received

their PhD between 2018 and 2024. Papers should be under 12 pages double spaced and submitted as a Microsoft Word doc to the email address below. Submissions will be evaluated by a committee comprised of C19 members.

Deadline: Papers should be submitted no later than 10 days after the conference, which is March 26, by 5:00 PST to c19risingscholar@gmail.com.

Travel Fund Awards

We thank our members for their generous donations to our 2024 Conference Travel Fund. Your support allowed us to grant 14 Travel Fund Awards. The recipients are as follows:

Rebekah Aycock

University of Kansas

Eric Bjornson

Boston University

Kevin A. Blanks

George Washington University

Klara Loc-Ling Boger

University of Michigan

Rowshan Chowdhury

University of Massachusetts Amherst

Philippa Chun

Rowan University

Jareka Dellenbaugh-Dempsey

Emory University

Eike Exner

Independent Scholar

Adam Fales

University of Chicago

Miriam Juárez

New York University

Yoonsuh Kim

University of Illinois Urbana-Champaign

Mich Ling

Rutgers University

Stephanie L. Lu

University of British Columbia

Lawrence Mullen

University at Buffalo, SUNY

Nicole Musselman

University of South Florida

Madeline Olley

Syracuse University

Susannah Sharpless

Cornell University

Matt Steinhafel

Catholic University of America

Mikala Stokes

Northwestern University

2024 Conference Health and Safety

Out of concern for our colleagues who have health issues or are caring for those who do, we recommend that you practice social distancing and remain masked—with a N95, KN95 or KF94 mask or their equivalent—while indoors during the conference, even if local area regulations do not recommend such measures. Presenters, however, should remove their masks unless they need to keep them on for health reasons. As a courtesy, we will have a limited number of Covid-19 rapid antigen tests for participants who require testing while at the conference.

We ask that you not attend the conference if you are experiencing any Covid-19 type symptoms. If you begin experiencing such symptoms while attending the conference, please remove yourself from the meeting and make use of our rapid antigen tests. Our health and safety recommendations are intended to help make your conference experience as safe as possible.

Local Health and Safety Information

Nearest hospital

Huntington Hospital
100 W. California Blvd
Pasadena, CA 91105
(626) 397-5000

Nearest trauma center

Huntington Hospital
100 W. California Blvd
Pasadena, CA 91105
(626) 397-5000
(the only Level II trauma center in the area)

Nearest urgent care

Exer Urgent Care
600 S Lake Ave #105
Pasadena, CA 91106
(626) 844-8848
8:00 AM-8:00 PM

Nearest pharmacy

CVS Pharmacy (located in Target)
777 E Colorado Blvd
Pasadena, CA 91101
(626) 795-5472
Monday-Friday 10:00 AM-8:00 PM
Saturday 10:00 AM-6:00 PM
Sunday 11:00 AM-5:00 PM

Nearest 24-hour pharmacy

Rite Aid Pharmacy
531 N Glendale Ave
Glendale, CA 91206
(818) 241-9770

Nearest grocery stores

Target
777 E Colorado Blvd
Pasadena, CA 91101
Sunday-Thursday: 8:00 AM-11:00 PM
Friday-Saturday: 7:00 AM-11:00 PM

Ralph's
160 North Lake Avenue
Pasadena CA 91101
5:00 AM-1:00 AM

Covid testing stations

The pharmacies listed above stock antigen tests. For PCR tests, google “CVS Covid Testing” to find a MinuteClinic with availability at the time.

CHILDCARE

West Side Sitters

<https://westside-sitters.business.site/>
West Side Sitters charges \$25 per hour, with a four-hour minimum and a \$20 traveling fee. Their owner, Debra, prefers to speak to guests directly so that she can get an idea of what sitter might work best for each child.

Care.com

care.com
Online platform that connects users with caregivers in their area.

Committees 2022-2024

EXECUTIVE COMMITTEE

Rodrigo Lazo, President
University of California, Santa Cruz

Jennifer James, Vice President
George Washington University

Lara Langer Cohen, Program Chair
Swarthmore College

Matthew E. Suazo, Membership Chair
Kenyon College

Travis Foster, Communications Chair
Villanova University

Crystal S. Donkor, Member at Large
State University of New York, New Paltz

Magdalena Zapędowska, Member at Large
Smith College

Paul Erickson, Treasurer
William L. Clements Library,
University of Michigan

PROGRAM COMMITTEE

Lara Langer Cohen, Chair
Swarthmore College

Holly Jackson
University of Massachusetts Boston

Jess Libow
Haverford College

Caroline H. Yang
University of Massachusetts Amherst

MEMBERSHIP COMMITTEE

Matthew E. Suazo, Chair
Kenyon College

Eve Eure
Lehman College CUNY

Ian Wilson
University of New Hampshire

COMMUNICATIONS COMMITTEE

Travis Foster, Chair
Villanova University

Kassie J. Baron
University of Iowa

Adam Fales
University of Chicago

NOMINATIONS COMMITTEE

ELECTED:

Anna Mae Duane, Chair
University of Connecticut

Julia Lee
University of California, Irvine

RJ Boutelle
University of Cincinnati

OUTGOING

Eric Gardner, Chair
Saginaw Valley State University

Ayendy Bonifacio
University of Toledo

Jewon Woo
Lorain County Community College

AD HOC COMMITTEE ON EVENTS

Debbie Lelekis, Chair
Texas A&M International University

Crystal Donkor
SUNY New Paltz

Magdalena Zapędowska
Smith College

Susanna Ashton
Clemson University

Marlas Yvonne Whitley
New York University

PODCAST COMMITTEE

Ashley Rattner, Co-Chair
Jacksonville State University

Ryan Charlton, Co-Chair
Georgia State University)

Julia Bernier
Washington & Jefferson College

Crystal Donkor
SUNY New Paltz

Genevieve Johnson-Smith
Newcastle University

Lizzy LeRud
Minot State University

Stefan Schöberlein
Texas A&M University–Central Texas

Jessica Van Gilder
University of Kentucky

PODCAST ADVISORY COUNCIL

Travis Foster
Villanova University

Rachel Boccio
LaGuardia Community College

DeLisa Hawkes
University of Tennessee, Knoxville

Early Career Connections Program

C19 is continuing a pilot program initiated in 2020 to connect scholars of color in the early stages of their academic careers with mentors with substantial professional experience.

Jennifer James, Chair, The George Washington University

PARTICIPANTS

Sarah Buckner
Allegheny College

Dalia Davoudi
Pratt Institute

Jessica Horvath Williams
University of Minnesota

Tabitha Lowery
Coastal Carolina University

Sri Basu McCall
University of California, Irvine

Sarah Robbins
Tufts University

Christofer Rodelo
University of California, Irvine

Alonzo Smith
Appalachian State University

Elisabeth M. Yang, University of Leeds

Ami Yoon
Baruch College, CUNY

Hyunjoo Yu
University of Puget Sound

MENTORS

Sarah E. Chinn
Hunter College, CUNY

Raúl Coronado
University of California, Berkeley

Brigitte Fielder
University of Wisconsin-Madison

Jennifer Greiman
Wake Forest University

Jennifer James
The George Washington University

Dana Luciano
Rutgers University New Brunswick

Barbara McCaskill
University of Georgia

Derrick R. Spires
University of Delaware

Priscilla Wald
Duke University

Caroline Wigginton
University of Mississippi

Gretchen Woertendyke
University of South Carolina

Xine Yao
University College London

Sample Itineraries

The Site Committee has prepared a mix of adventures, easily accessible from the Westin via public transit (it’s true–you CAN get around LA without a car), and invites you to explore Los Angeles at your own pace on your own terms.

Travel times from the Westin are included with each itinerary, and public transit directions are available in Apple Maps, Google Maps, or Citymapper. Transit options in Pasadena, Los Angeles, and Santa Monica all accept the Transit Access Pass (TAP)–use your phone to pay with the TAP app. Kids under 6 ride free on public transit.

I have a couple of hours and I ...

LOVE NATURE



“**Arroyo Seco**” means “dry gulch” in Spanish and was named by explorer Gaspar de Portolá. The land was first inhabited by the Hahamog’na Tribe of Tongva. A stream runs from near Mount Wilson through the Arroyo and eventually into the Pacific Ocean, creating a lush urban forest in the middle of Pasadena with 22 miles of trails. 10-minute drive, 1-hour walk, 40 minutes by public transit.



Arlington Garden is a three-acre garden that serves as a refuge for Pasadena’s native fauna. Birds, bees and butterflies are particularly abundant and can be seen throughout the year. 9-minute drive, 45-minute walk, 50 minutes by public transit.

LOVE NATURE AND A MUSEUM TOGETHER



The Huntington Library, Art Museum, and Botanical Gardens. With 130 acres encompassing over a dozen themed gardens (including a Children’s Garden), every nature lover will find something to marvel at here. The museum’s varied collections include landscapes by Fredric Edwin Church. You will need at least three hours to do both the gardens and museum but an hour will give you a taste of one. Receive \$10 off Adult or Student (w/ID) admission to The Huntington from Thursday, March 14 through Saturday, March 16 during regular public hours (10:00 AM–5:00 PM). Please reserve in advance using discount code LIBRARYC19. 9-minute drive, 1 hour walk, 40 minutes by public transit.

LOVE MUSEUMS



Norton Simon Museum. Known around the world as one of the most remarkable private art collections ever assembled, Norton Simon features a nineteenth-century gallery, European art from the Renaissance to the 20th century, and a stellar collection of South Asian and Southeast Asian art spanning 2,000 years. The museum is near the conference and can be done in a couple of hours. 27-minute walk, 4-minute drive, or 15 minutes by public transit.



The Armory Center for the Arts. The Armory Center for the Arts has been the forefront of art education in Southern California for more than 60 years, maintaining the commitment to providing accessible public spaces for the exhibition of contemporary art and to providing meaningful experiences in art education. 10-minute walk, 1-minute drive, or 8 minutes by public transit.



The Pasadena Museum of History. PMH maintains rotating exhibitions and ensures the area’s largest collection of documents and artifacts related to the history of Pasadena and the west San Gabriel valley is available to researchers. 5-minute drive, 25-minute walk, or 22 minutes by public transit.



Mission San Gabriel Arcángel. The 4th of California’s 21 historic missions, Mission San Gabriel Arcángel was founded on September 8, 1771. The church, museum, and gardens are open to the public for self-guided tours every day except for Monday. 20-minute drive, 1 hour by public transit.

HAVE KIDS



Kidspace Children’s Museum. Kidspace is a nonprofit museum in Pasadena designed to delight and engage children emotionally, intellectually, and physically through joyful, kid-driven experiences. 7-minute drive, 45-minute walk, or 30 minutes by public transit.



Parks. The Westin is surrounded by outdoor playgrounds. Central, Playhouse Village, Memorial, and Villa parks are all within a mile of the hotel. Brookside is 1.5 miles away, but it is right next to Kidspace.

I have a few hours and I...

LOVE NATURE



The Los Angeles County Arboretum. The Los Angeles County Arboretum and Botanic Garden is a unique 127-acre botanical garden and historical site. Discover plants and trees from all over the world as you wander along paths and learn about California history on your journey through the garden. 20-minute drive, or 40 minutes by public transit.



Angeles National Forest. The Angeles National Forest, established in 1892, covers over 650,000 acres and offers 557 miles of hiking and equestrian trails which include 73 miles of National Recreation Trails and 176 miles of the Pacific Crest Trail (PCT). The forest is located just north of the Westin and several trailheads are within a 10-minute drive from the hotel. We recommend Eaton Canyon, Walnut Canyon, or Henninger Flats – see alltrails.com for fuller descriptions of these and more. 10-minute drive, or 45 minutes by public transit.

LOVE MUSEUMS



The Broad. The Broad is home to nearly 2,000 works by more than 200 artists and is one of the world’s leading collections of postwar and contemporary art. The collection features artists such as Jean-Michel Basquiat, Mark Bradford, Jasper Johns, Jeff Koons, Barbara Kruger, Yayoi Kusama, Kerry James Marshall, Julie Mehretu, Takashi Murakami, Robert Rauschenberg, Ed Ruscha, Cindy Sherman, Cy Twombly, Andy Warhol, and more, plus an ever-growing representation of younger artists. And it’s free! 20-minute drive, 45 minutes by public transit.



The Museum of Contemporary Art (MOCA). Established in 1979, MOCA is the only artist-founded museum in Los Angeles. They house a compelling collections of contemporary art, comprising nearly 8,000 objects, and have a diverse history of ground-breaking, historically-significant exhibitions. 20-minute drive, 45 minutes by public transit.



The Japanese American National Museum. As the national repository of Japanese American history, JANM creates groundbreaking historical and arts exhibitions, educational public programs, award-winning documentaries, and innovative curriculum that illuminate the stories and the rich cultural heritage of people of Japanese ancestry in the United States. 20-minute drive, 40 minutes by public transit.



The Museum of Social Justice. The Museum is home to a series of diverse public programs and education initiatives. Revolving exhibitions showcase the history of Los Angeles and social change from the perspective of the poor, minorities, and other marginalized groups. 20-minute drive, 40 minutes by public transit.

**WANT TO LEARN
ABOUT LOCAL CULTURES
AND HISTORY**



La Plaza de Cultura y Artes. La Plaza is a community center featuring exhibitions, music, dance, culinary arts, as well as multigenerational artmaking and storytelling experiences. LA Plaza uplifts, shares, and preserves the stories of Mexicans, Mexican Americans, and Latinx people in Southern California. It is also walking distance from Olvera St, which, despite its complicated history (it didn't exist during California's Mexican period) is still an economic hub of Latinx LA and worth a visit. 20-minute drive, 40 minutes by public transit.




California African American Museum (CAAM). CAAM's mission is to research, collect, preserve, and interpret for public enrichment the history, art, and culture of African Americans with an emphasis on California and the western United States. 25-minute drive, 1 hour by public transit.

Want to know what daily life in Mexican Los Angeles was like in the early nineteenth century?

Download the “Picturing Mexican America” app!*

Designed by Marissa López, UCLA professor and member of the C19 conference Site Committee, the app includes two self-guided bike tours (starting from places where you can inexpensively rent city-owned bikes) in addition to several other features illuminating Mexican Los Angeles in the long nineteenth century.



*iOS only

HAVE KIDS



Natural History Museum of Los Angeles County. NHMLAC protects and shares more than 35 million specimens and artifacts, the largest natural and cultural history collection in the western United States. 25-minute drive, 1 hour by public transit.



California Science Center. Right next door to NHM, the Science Center features recreations of California's diverse ecosystems and a touch pool where you can get up close and personal with marine life. (The shuttle Endeavor is off display.) 25-minute drive, 1 hour by public transit.



Griffith Observatory. Griffith Observatory is southern California's gateway to the cosmos! Visitors may look through telescopes, explore exhibits, see live shows in the Samuel Oschin Planetarium, and enjoy spectacular views of Los Angeles and the Hollywood Sign. 25-minute drive, 1.5 hours by public transit



Hollywood Walk of Fame. The Walk of Fame runs 15 blocks of Hollywood Blvd and 3 blocks of Vine St. Take pictures with impersonators, see movie stars' handprints at the Chinese Theater, behold wonders at Ripley's Believe it or Not Museum ... it's all right there on Hollywood Blvd between La Brea and Gower. 25-minute drive, 1 hour by public transit.

I have a whole day and I...

LOVE NATURE



You could spend weeks in the Angeles National Forest, but for even more adventures explore ...

Griffith Park. With over 4,210 acres of both natural chaparral-covered terrain and landscaped parkland and picnic areas, Griffith Park has something for everyone. 15-minute drive, 1 hour by public transit.



Santa Monica Mountains National Recreation Area. The Santa Monica Mountains offer easy access to surprisingly wild places. Experience the famous beaches of Malibu or explore more than 500 miles of trails. 1-hour drive, 2 hours by public transit.

LOVE MUSEUMS



You could make a day of visiting DTLA (downtown LA) museums (MOCA, the Broad, etc), but if you want to go further afield, check out ...

Bergamot Station Arts Center. Bergamot Station is a leading arts and cultural hub of visual and performing arts organizations. For nearly three decades, it's been a pillar of the Santa Monica arts community offering free-to-the-public opportunities to view and interact with a series of unique arts environments including fine art galleries, monumental scale installations, live performances, video art, music, educational programs, poetry, comedy, theater performances.

LOVE HISTORY



The Los Angeles Conservancy. The Conservancy's tours — both organized and self-guided — connect countless Angelenos and visitors with LA's history, storied buildings, and unique places that make the county so special.

Special Events

THURSDAY, MARCH 14	
12:30–1:20 PM MADERA ROOM LEVEL 1	Luncheon for Scholars of Color
6:00–7:00 PM COURTYARD PLAZA LEVEL	G19 Mixer
7:00–9:00 PM CERVECERIA DEL PUEBLO 141 W. BELLEVUE DR, #100 PASADENA	Common Table Dinner <i>This event requires pre-registration and is now sold out.</i>

FRIDAY, MARCH 15, 2024	
12:30–1:20 PM	Cluster Lunches <i>If you ordered a pre-packaged lunch, please pick it up at the Madera Room and proceed to the meeting space for your cluster.</i>
MADERA LEVEL 1	Americanists Abroad Cluster, Environmental Cluster, Hemispheric/Transnational Cluster
LEISHMAN	Critical Childhood Studies Cluster
SAN PASCUAL	Archives and Print Culture Cluster
SAN GABRIEL	Women Writers Cluster
ARCADIA	Editing the Nineteenth Century Cluster
12:30–1:20 PM SAN RAFAEL	W1. The Changing English Major: A Pedagogy Workshop Moderators: Sarah Blackwood (Pace University) and Joseph Rezek (Boston University) Many English departments around the country are re-thinking what it means to be an English major and have revised the requirements for their degrees. Join us for an informal lunchtime discussion of the place of American literature in the English major today. We will share syllabi, lesson plans, teaching strategies, and consider the role of literature in a liberal arts.
3:00-4:20 PM ARCADIA	Meet the <i>J19</i> Editors
3:00-4:00 PM SIERRA MADRE	Meet the Nominations Committee
4:00–5:00 PM SIERRA MADRE	C19 Podcast Subcommittee Drop-In Hour

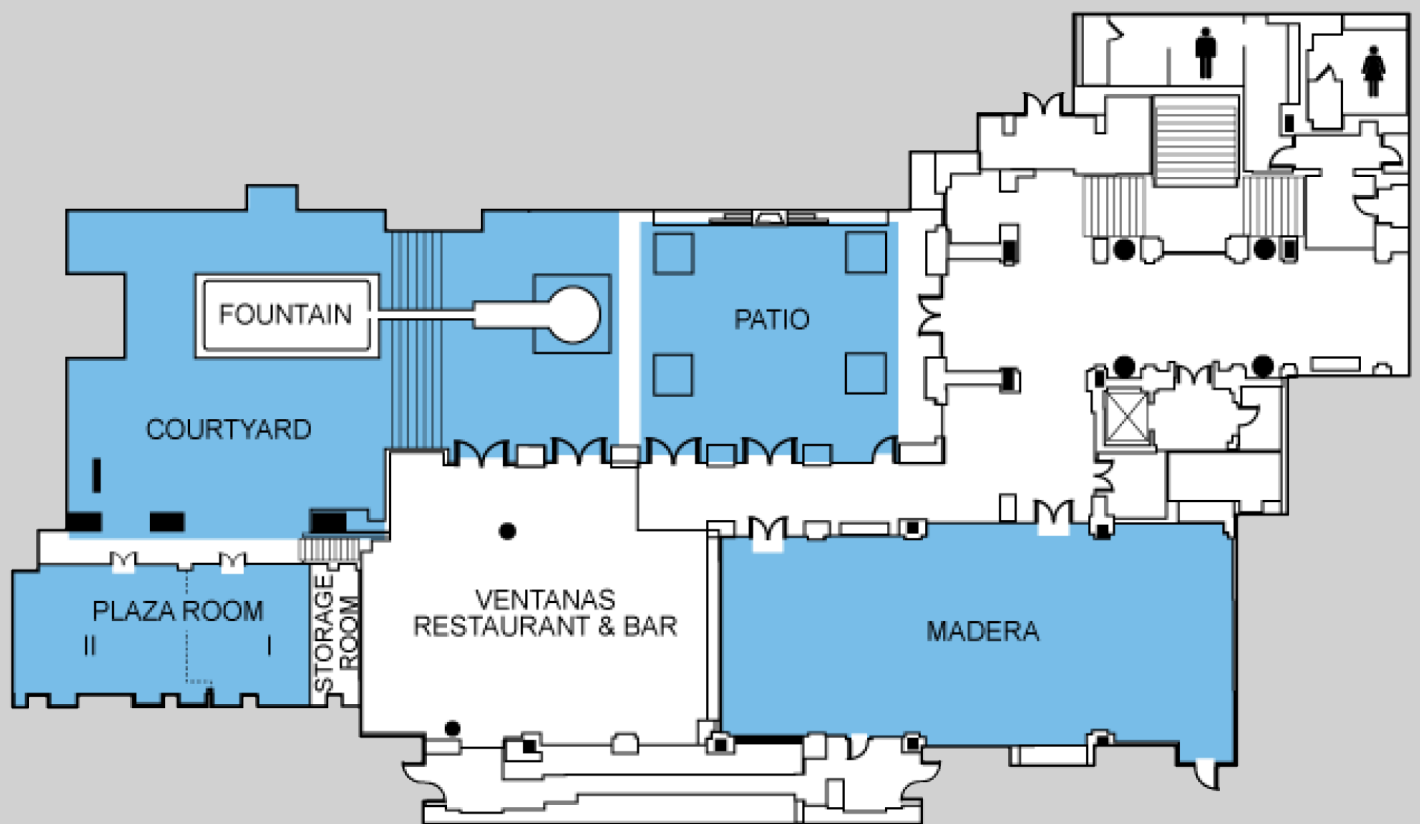
EVENTS IN DOWNTOWN LOS ANGELES	
	The following two events will take place in downtown Los Angeles. A bus will leave the Westin Pasadena on the Walnut St side at 1:15 PM and can take 55 people on a first-come, first-served basis. It will drop off at the Los Angeles Central Library. The LA Central Library tour requires pre-registration, but you can also take the bus to visit museums, etc. in downtown. The bus will pick up people at the LA Central Library at 6:15 PM for a return to the Westin.
2:00–4:00 PM 630 W 5TH ST LOS ANGELES CA 90071	Tour of Los Angeles Central Library This includes visits to the Rare Book Room and Photo Collections and requires pre-registration.
4:30–6:00 PM 506 S GRAND AVE LOS ANGELES CA 90071	Informal Gathering at the Biltmore Hotel, Gallery Bar and Cognac Room <i>Please note that the bus returns at 6:15 PM.</i>

SATURDAY, MARCH 16, 2024	
12:30–1:20 PM SAN RAFAEL	W2. Against Crisis: A Workshop on Organizing a Future for Academic Labor <i>Moderator: Eagan Dean</i> (Rutgers University, New Brunswick) <i>Presenters: Max Chapnick</i> (Northeastern University), Francesca Colonnese (University of Wash- ington), Mushira Habib (University of Oregon), Michelle Ling (Rutgers University, New Brunswick), Lawrence Mullen (University of Buffalo), Ashley Rattner (Jacksonville State University) How do academic workers build power when higher education is in crisis? This workshop offers a chance to learn from each other’s experiences and to strategize together for the future. We will begin with reports from the field from organizers at a range of institutions, and then form breakout groups for participants to discuss their own institutions’ unionization status, as well as potential plans (and roadblocks) for the future, with new and seasoned organizers.
12:30–1:20 PM MADERA ROOM LEVEL 1	C19 Business Meeting The business meeting is open to all members and will include a biennial update on the Society, as well as a discussion of its future directions.
6:00–9:00 PM COURTYARD WESTIN PASADENA	Closing Reception Closing cocktail reception with a celebration of authors.

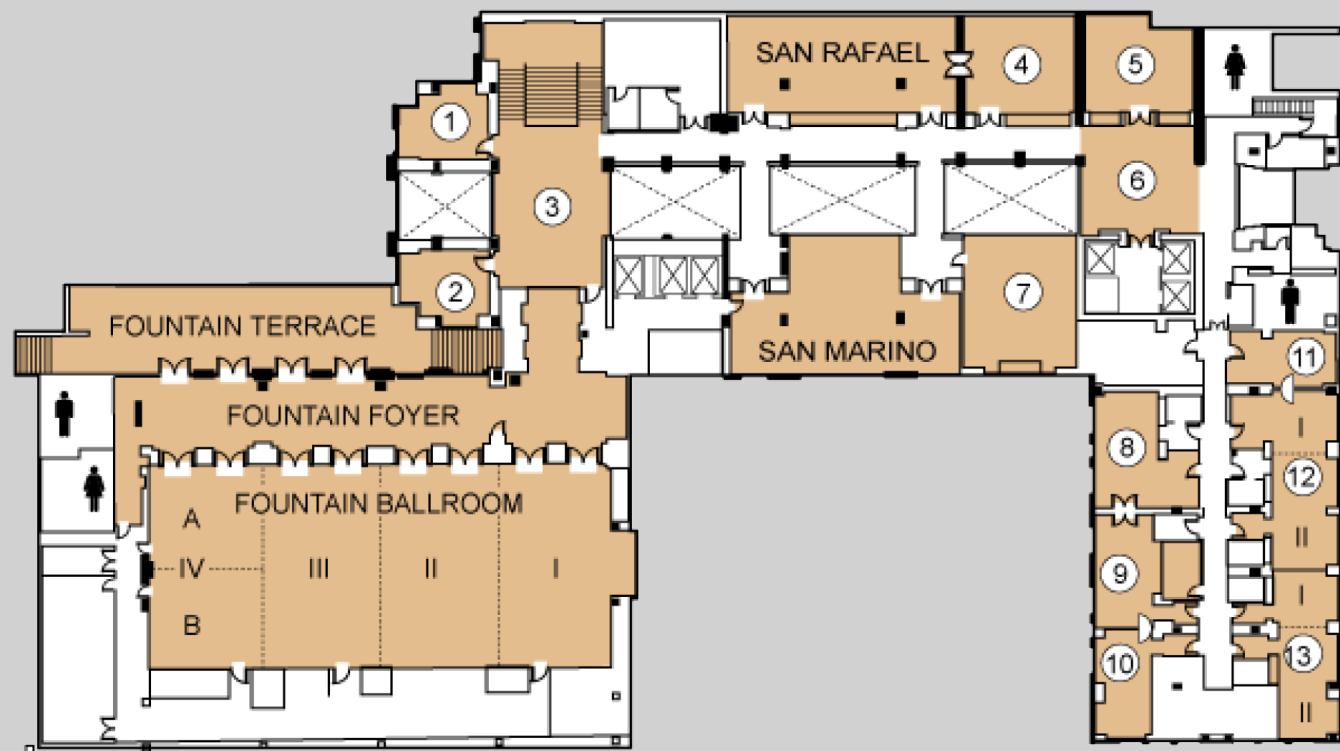
THURSDAY, MARCH 14-SATURDAY, MARCH 16	
	Receive \$10 off Adult or Student (with ID) admission to The Huntington Library, Art Museum, and Botanical Gardens from Thursday, March 14 through Saturday, March 16 during regular public hours (10:00 AM-5:00 PM). Please reserve in advance using discount code LIBRARYC19. Limited to 1 ticket per conference attendee. Get tickets and information at .org/plan-your-visit. (Our deepest appreciation to the Huntington for making this possible.)

The Westin Floor Plan

PLAZA LEVEL



SECOND LEVEL



- 1. Sierra Bonita
- 4. San Pascual
- 5. San Gabriel
- 6. San Gabriel Foyer
- 7. Leishman
- 8. Arcadia
- 9. Sierra Madre
- 12. Los Feliz
- 13. Altadena



C. C. Pierce, Pueblo Church of
Nuestra Señora La Reina de Los Angeles.
Courtesy of the Huntington Library.

Seminars

8:00-11:00 AM
Los Feliz

S1. How to Apply for Library Research Fellowships

Seminar Leaders: **Paul Erickson** (William L. Clements Library, University of Michigan) and **Susan Juster** (The Huntington Library)

Journalistic Ecology

Thomas Howard (Bilkent University)

Publishing the Empire: New York City, Mexico, and the US Southwest through Print

Miriam Juarez (New York University)

Interdisciplinary Scholarship and Applying for Research Fellowships

Sam Lyons (University of California, San Diego)

Women's Spiritualist Writing in Libraries and Archives

Ashley Reed (Virginia Tech)

Edith Wharton and the Perils of Female House Museum Curatorship

Lisa McGunigal (Missouri Southern State University)

11:30 AM-2:30 PM
Los Feliz

S2. Health

Seminar Leaders: **Sari Altschuler** (Northeastern University) and **Priscilla Wald** (Duke University)

Sexual and Perceptual Deviance in the American Nineteenth Century

Patrick Kindig (Tarleton State University)

Health and the Emergence of a Middle-Class Consumer Ethic

Andrew Bishop (University of Texas)

Narrative Forms of Public Health

Yoonsuh Kim (University of Illinois at Urbana-Champaign)

Biophilia & Biopolitics: C19 Genealogies of Environmental Wellness

Cristin Ellis (University of Mississippi)

Health without Care

Shari Goldberg (Franklin & Marshall College)

The Shapeshifting Mental Health of the Modern Girl

Lisa Mendelman (Menlo College)

Cholera’s Clock: A Reading of Race, Time, and Health in the “Notebook of the University of Virginia”

Bridget Reilly (University of Virginia)

Boundaries and Health via Nineteenth Century America

Heather Chacon (Greensboro College)

Theorizing Debility and Disability in Antebellum Abolition Literature

Andrew Erlandson (Penn State University, University Park)

Moral Cognition: Understandings of Cognitive and Moral Health in Sedgwick and Cooper

Lucy Wallitsch (Emory University)

Asylum Activism and the Politics of Health

Lindsey Grubbs (Case Western Reserve University)

Paints and Pesticides

Mary Kuhn (University of Virginia)

Abled Visions of a Racial Future; or, Why We Need a New Genealogy for What Would Become Eugenics

Jessica Horvath Williams (University of Minnesota)

“A specimen of powers that are wholly new,” or, Clara Wieland in the Age of Lamarck

Lynn Wardley (Independent Scholar)

Spectacular Health in Antebellum America

Victoria Stewart (University of Illinois at Urbana-Champaign)

3:00-6:00 PM

Los Feliz

S3. The Latinx and Asian American Nineteenth Century

Seminar Leaders: Marissa K. López (UCLA) and Julia H. Lee (UC Irvine)

Early US Central American Literatures in Nineteenth-Century San Francisco

Gabriela Valenzuela (California State University, Los Angeles)

Historicizing C19 Latinx Relationality

Christofer Rodelo (University of California, Irvine)

Warring Entities: Mexican American Protestant Memoir at the Turn of the Century

Sara Flores (Washington University in St. Louis)

A Reverse Underground Railroad? Smuggling Routes, Racial Passing, and Redemption as Racial Capital in Sui Sin Far’s Journalism and Short Fiction

Klara Boger (University of Michigan–Ann Arbor)

The Chinese Vote, the Reconstruction Amendments, and Californio Racial Triangulation in the 1868 Partisan Press

Leila Mansouri (Scripps College)

Excavating the Satiric Chinese Travelogue: Linking Sui Sin Far & Mark Twain

Spencer Tricker (Clark University)

The Race for the Pacific: Settler Science and East Asian Racialization

Michelle Ling (Rutgers University)

Alfred Edward Mathews,
Los Angeles, 1873. Courtesy of
the Huntington Library.

8:00-11:00 AM
Los Feliz

S4. Insecurity and Catastrophe

Seminar Leaders: **Anna Brickhouse** (University of Virginia)
and **Russ Castronovo** (University of Wisconsin–Madison)

Paper Empire: The Aesthetics of Geographical Impossibility
Lauren Coats (Louisiana State University)

Unlearning the 1857 Rebellion: Why Does Naming Matter?
Rowshan Chowdhury (University of Massachusetts, Amherst)

“When the Mother of the Race is Free, We Shall Have a Better World”: Charlotte Perkins Gilman’s Eugenic Feminism
Stephanie Lu (University of British Columbia)

Narrating African American Precarity in Antebellum New York
Lori Merish (Georgetown University)

Melville versus Catastrophic Ignorance
Justina Torrance (Santa Clara University)

8:00-11:00 AM
Altadena

S5. Psychoanalysis and the Nineteenth Century
Seminar Leaders: **Brian Connolly** (University of South Florida)
and **Nat Hurley** (Memorial University)

Melville’s “Hypos”: On Hypochondria and the Freudian Symptom
James Godley (Dartmouth College)

The Libidinal Economy of the Spirit Photograph
Dana Luciano (Rutgers University, New Brunswick)

Terminable: Psychoanalysis and Loss
Peter Coviello (University of Illinois, Chicago)

Rethinking Psychohistory: George Forgie in the Atlantic
Kevin Modestino (Howard University)

Henry James and Louisa May Alcott: An “Intergenerational Libidinal Economy”
Max Chapnick (Northeastern University)

Friendship as a Work of Art: Friendship Albums, Intersubjectivity, and the Aesthetic Moment
Chip Badley (University of California, Davis)

11:30 AM-2:30 PM
Los Feliz

S6. Misfit Projects
Seminar Leaders: **Monica Huerta** (Princeton University)
and **Kyla Wazana Tompkins** (Pomona College)

“A Quill of Exceptional Vigor”: Salvaging Alice Bower’s Misfit Novella
Rachel Brown (Washburn University)

New Media Temporalities for Nineteenth-Century Literary Studies
Dalia Davoudi (Pratt Institute)

Sex and the Series
Dorri Beam (Syracuse University)

Phillis Wheatley’s Literary Afterlife and the Material Culture of Games
Jennifer Factor (Brandeis University)

To Walk the World as a Wound: Heartbreak, Rupture, and Collective Care in Mary Prince
Sarah Buckner (Allegheny College)

Daniel Webster’s Tears: Privacy, Indigeneity, and the Early American Corporate University
Peter Jaros (Franklin & Marshall College)

Lost Ways
Rachel Bolten (Stanford University)

Pale Enshellement: Whiteness, Extraction, and the Early American Entomological Umagination
Sammy Moriarty (King’s College London)

Writing Where We Are
Amy E. Hughes (University of Michigan–Ann Arbor)

Elsie’s Girls: Domestic Fiction and the Making of 1990s Evangelical Girlhood
Hannah Wakefield (University of Tennessee at Chattanooga)

Writing Revenge
Gregory Laski (United States Air Force Academy)

“Buffalo Bird Woman’s Garden” and the Shape of Seed Caching
Katrina Dzyak (Columbia University)

3:00-6:00 PM
Los Feliz

S7. Black-Indigenous Futurisms

Seminar Leaders: **Katie Walkiewicz** (University of California, San Diego) and **DeLisa Hawkes** (University of Tennessee, Knoxville)

Amid Apocalypse: Speculative History and the Persistence of the Past in Du Bois’s *Darkwater*

Justin Chandler (Georgia Institute of Technology)

Yesterday Looks like Today: Where did the Underground Railroad End and Greater Freedom Ascend?

dann j. Broyled (University of Massachusetts, Lowell)

“How do you have language”: Black and Indigenous Feminist World-Building in Cherie Dimaline’s *The Marrow Thieves*

Eve Eure (Lehman College, City University of New York)

Indigenous Futures and Incomplete Archives: The Curious Case of Betsey Guppy Chamberlain’s “A New Society” (1841)

Adam Syvertsen (Northwestern University)

N.K. Jemisin and the Optative Mood of Haiti

Mary Grace Albanese (Binghamton University, SUNY)

The Promise and The Threat of America’s End in *Imperium in Imperio*

Jess Goldberg (New Mexico Highlands University)

Prophesying Citizenship in Edward A. Johnson’s *Light Ahead for the Negro*

Annemarie Ewing (University of Maryland, College Park)

The Colonial Anthropocene Imaginary: Re-Imagining Climate Futures in Indigenous Speculative Fiction

Marina Pingler (University of Tuebingen)

Time Traveling Form in Black and Indigenous Periodical Poetry

Caroline Wigginton (University of Mississippi)

Transnational Means, Utopian Ends: A Genealogy of Black Futurist Counterhistories of Self-Determination and Nationhood

M. Giulia Fabi (University of Ferrara)

Meddling with History, Affiliating towards the Future

Hai In Jo (Texas A&M University)

8:00-11:00 AM
Los Feliz

S8. At the Last

Seminar leaders: **Peter Coviello** (University of Illinois Chicago) and **Sarah Ensor** (University of Wisconsin-Madison)

Dwelling on Collapse: The Willey Family Catastrophe as Post-Human Imagining

Patrick Morgan (University of Louisiana)

Emerson at the Last: Experience and Grief at the Death of the Planet

Michelle Neely (Connecticut College)

Pregnant Moments and Temporal Potentiality in Cusick’s *Sketches of Ancient History of the Six Nations*

Patricia Roylance (Syracuse University)

Disappearing at the Last: Liminal Embodiment and Alternative Time in *Hope Leslie*

Jareka Dellenbaugh-Dempsey (Emory University)

Pioneer Remorse: Apocalyptic Rebirth and Imperialist Nostalgia

John Hay (University of Nevada, Las Vegas)

Periodicals’ Period: Western Poetry in 1870

Noah Warren (University of California, Berkeley)

Hindu Women and Indian Independence Movement: Pandita Ramabai in the USA

Shaibal Dev Roy (University of Southern California)

Losing Queer Time: Alice Dunbar-Nelson’s Spinster Fiction and the Labor of Social Reproduction

Rachael DeWitt (Columbia University)

“Dateless, indefinite endurance”: Melville at the End

Elizabeth Apple (Duke University)

11:30 AM-2:30 PM
Los Feliz

S9. Race and Age: Black Childhood in the Nineteenth Century
Seminar leaders: **Crystal Lynn Webster** (University of British Columbia) and **Nazera Sadiq Wright** (University of Kentucky)

The Role of Black Childhood in Nineteenth-Century Enslaved Religious Cultures
Mélena Laudig (Princeton University)

Worthy of Record: Stories from the New-York Female Union Society Annual Reports
Sam Sommers (University of Connecticut)

Queering the Black Child: Race, Age, and Childhood Beyond the Color Line
Kevin Blanks (The George Washington University)

Loving Preservation: The Juvenilia of Mary Church Terrell
Laura Soderberg (University of Southern Indiana)

Finding the Line: Portraits of Black Children’s Literacy
Timothy Pantoja (New York University)

The Enslaved Child in Memory, Records, Objects, and Spaces: Questions of Methods and Meanings
Karen Sánchez-Eppler (Amherst College)

Play as Rage, Resistance, and Resilience in Harriet E. Wilson’s *Our Nig*
Ilana Larkin (Northwestern University)

William J. Wilson’s Object Lesson: Reading Childhood in “The Afric-American Picture Gallery” (1859)
Madeline Zehnder (Humboldt-Universität zu Berlin)

Being Made a Fence of: On Enslaved Children’s Labors
Ajay Batra (Vanderbilt University)

Young Writers in the Black Press
Jewon Woo (Lorain County Community College)

3:00-6:00 PM
Los Feliz

S10. Unfolding Editorship
Seminar Leaders: **Jean Lee Cole** (Loyola University Maryland), **Sarah H. Salter** (Texas A&M-Corpus Christi), and **Jim Casey** (Penn State University, University Park)

Editing Emerson’s Natural History of Intellect
Christopher Hanlon (Arizona State University)

The Editor on Stage: Fundraising and Black Entertainment in the *Weekly Anglo-African*
Magdalena Zapędowska (Smith College)

Albion Tourgee’s Paradoxical Editing
Ellen Gruber Garvey (New Jersey City University)

Dickinson’s Crip Editorial Poetics
Clare Mullaney (Clemson University)

Alice Dunbar-Nelson’s Editorship of the *Advocate* as Social Process, Not Print Product
Alice Martin (Rutgers University)

Dreaming on Paper: Editorship at the Limits of Literature in New York City’s Nineteenth-Century Spanish-Language Press
Kelley Kreitz (Pace University)

Abolition’s Afterlives: Peter H. Clark, the *Cincinnati Emancipator*, and Editing Race in the Early Socialist Press
Marc Blanc (Washington University in St. Louis)

Posthumous Fragments and the Editing of the Authorial Corpus in Early Nineteenth Century America
Matthew Pethers (University of Nottingham)

Radical Acts of Curation: Rethinking C19 Anarchist Editorial Activism
J. Michelle Coghlan (University of Manchester)

The Hamiltons: Assembling the *Anglo-African*
Mark Noble (Georgia State University)

Antiracist Editing
Kelly Ross (Rider University)

George W. Hazard, Los Angeles in 1869.
Courtesy of the Huntington Library.



Panels

8:00 – 9:20 AM
San Rafael

P1. The End(s) of Originality?: The Transcendentalists and AI
Chair: Mark Gallagher (Orange Coast College)

The Nature of Artifice and the Use of Intelligence
Jason de Stefano (University of Chicago)

“Alexa—Shall I not have intelligence with the earth?”: Sustainability, Surveillance, and Nineteenth-Century Smart Homes
Jenna Gersie (University of Colorado, Boulder)

Prediction and Originality: AI and Emerson
Maurice Lee (Boston University)

Spiral Tendencies, Electric Elements: Emerson and Fuller on General Intelligence
Mark Noble (Georgia State University)

8:00 – 9:20 AM
Leishman

P2. Voices and Visions in the Poetry of Paul Laurence Dunbar
Chair: Jeong Yeon Lee (Yale University)

The Untouched Banjo: Paul Laurence Dunbar’s Recasting of the Talking Book
Timothy Pantoja (New York University)

“Ef de trump had chanced to blow”: Glimpsing Freedom in Paul Laurence Dunbar’s “The Party”
Jeong Yeon Lee (Yale University)

Paul Laurence Dunbar and the Shipwreck Ballad: The “End” as Spectacle
Isaac Robertson (New York University)

8:00 – 9:20 AM
San Pascual

P3. Race and Plasticity
Chair: Kate Adams (Tulane University)

The Training of the Human Child
Christa Vogelius (University of Southern Denmark)

“Colorless and structureless matrix”: Viscous Whiteness, Oceanic Slime, and Taxonomic Regression
Sammy Moriarty (King’s College London)

Automatic Selves, Automatic Slaves: Race Psychology |and Gertrude Stein
Joshua Lam (Michigan State University)

“The Laboratory of a Great Race-Welding”: Alain Locke’s Pragmatic Race Nationalism
M. Clay Hooper (Prairie View A&M University)

8:00 – 9:20 AM
San Gabriel

P4. The End(s) of Reconstruction
Chair: Brook Thomas (University of California, Irvine)

Reconstructing What? A Look at How Civil War-Era Americans Used the Term
David Prior (University of New Mexico)

Competing Accounts of Reconstruction’s End(s)
Brook Thomas (University of California, Irvine)

Reconstructing the Ending: Looking for the Nation in the Novels of Three Women Writers
Kathryn McKee (University of Mississippi)

Howells After (and At) the End of Reconstruction
Andrew Donnelly (University of Mississippi)

9:30 – 10:50 AM
Leishman

P5. Slavery and Endings: Critical Approaches to Black Freedom in the North
Chair: Crystal Lynn Webster (University of British Columbia)

The End of Chattel Slavery and the Beginning of Carceral Slavery: The Rise of Profit-Driven Incarceration in Antebellum New York
Robin Bernstein (Harvard University)

The North as Prequel: Parallel Endings in the Northern and Southern United States
Leslie Harris (Northwestern University)

Federalism, Northern Emancipation, and Black Politics
Sarah Gronningsater (University of Pennsylvania)

Slavery and the End of the Revolutionary War in Canada: (Im)mobility and (Un)Freedom in Black and White
Charmaine Nelson (University of Massachusetts, Amherst)

9:30 – 10:50 AM
San Gabriel

P6. A Fin de Siècle for Comics in America
Chair: Alex Beringer (University of Montevallo)

“Odd Combinations of Language”: The End of Pictographic Wit
Alex Beringer (University of Montevallo)

Reuse, Reorder, Remix: Creative Constraints in Nineteenth-Century Comic Production
Phillippa Pitts (Boston University)

Out with the Queues, in with Modernity: American Anti-Chinese Cartoons in 1890s Japanese Periodicals
Eike Exner (Independent Scholar)

Women’s Comics in the Long Nineteenth Century: A Beginning and an End
Jean Lee Cole (Loyola University Maryland)

9:30 – 10:50 AM
San Pascual

P7. Contested Authority: Illness, Medicine, and Power
Chair: Jane Thrailkill (University of North Carolina at Chapel Hill)

Telegraphic Mesmerism: Madness, Sexuality, and the Asylum in the Diary of Charles A. Beach, Illustrator and Children’s Author
John Garcia (American Antiquarian Society)

Addiction and the Troubled Ends of Domesticity in Lydia Sigourney’s “Louisa Wilson”
Eric Bjornson (Boston University)

The Ends and Beginnings of Women’s Mental Health Diagnoses
Lisa Mendelman (Menlo College)

“Sacredly Confidential”: Patent Medicine, Anecdotes, and Medical Modernity in Turn-of-the-Century Women’s Magazine Culture
Yoonsuh Kim (University of Illinois at Urbana-Champaign)

9:30 – 10:50 AM
San Rafael

P8. Poetic Theory in the C19 United States: Translation
Chair: Virginia Jackson (University of California Irvine)

A Chinese ‘Raven’ (2024...1894...1845...“the chanye year”)
Gregory Londe (Cornell University)

Sea Poetics c. 1850
Nadia Nurhussein (Johns Hopkins University)

Bamewawagezhikaquay Jane Johnston Schoolcraft’s Wind Harp Poetry
Ethan Plaue (University of Pennsylvania)

The Transmission Poetics of John Rollin Ridge/ Yellow Bird (Chees-quat-a-law-ny)
Justin Tackett (University of Warwick)

Alexander Posey’s Hummingbird Theory
Caroline Wigginton (University of Mississippi)

11:00 AM – 12:20 PM
San Rafael

P9. New Directions in Nineteenth-Century Black Activism and the Colored Conventions Movement
Chair: P. Gabrielle Foreman (Penn State University)

When Did the Colored Conventions End?
Jim Casey (Penn State University)

“With Fife and Drum”: A Rhetorical History of the 1866 Tennessee State Colored Convention
Andre E. Johnson (The University of Memphis)

“Despair Settle upon Our Souls:” Racial Violence and the Emigration in Alabama Colored Conventions, 1866–1874
Selena Sanderfer Doss (Western Kentucky University)

We’ve Always Been Here: Reclaiming Black Women’s Presence in the Postbellum Colored Conventions
Morgan A. Robinson (Penn State University)

11:00 AM – 12:20 PM
San Pascual

P10. Never Say Die: Secular Immortalities in the Long Nineteenth Century
Chair: Ashley Barnes (University of Texas, Dallas)

The Many Afterlives of Emily Dickinson
Jessica Elkaim (University of Toronto)

Folding Dickinson
Jonathan Elmer (Indiana University)

From Freethought Celebrations to Spirit Manifestations: The Many (After)lives of Thomas Paine’s Deism
Auréliane Narvaez (Université Paris Nanterre)

On Beginning at the End in Anatolia: Ottoman Ruins and Cosmopolitan Afterlives in 19C Travel Writing
Patrick McDonald (Bilkent University)
Respondent: Dawn Coleman (University of Tennessee, Knoxville)

11:00 AM – 12:20 PM
Leishman

P11. Labor, Minerals, and the End(s) of Extractive Capitalism
Chair: Michelle Neely (Connecticut College)

The “mystical wellspring of value”: Energy, Capital and Crisis in *Moby-Dick*
Paul Downes (University of Toronto)

The ‘Vast Gilded Void’ of Leisure: Energy and Work in *The House of Mirth*
Alexis Schmidt (University of Illinois)

Compounding Metal’s Ends in Paulding Farnham’s Ptarmigan Vase
Christine Garnier (USC Society of Fellows)

A Tale of Two Coins
Jeffrey Insko (Oakland University)

11:00 AM – 12:20 PM
San Gabriel

P12. Art, Climate Crisis, the Nineteenth Century, and the Public Humanities: Curating “Storm Cloud” at The Huntington
Chair: **Michele Currie Navakas** (Miami University)

Pretty Pictures of Disaster
Melinda McCurdy (The Huntington Library, Art Museum, and Botanical Gardens)

Most Books Look Boring
Karla Ann Merino Nielsen (The Huntington Library, Art Museum, and Botanical Gardens)

Fossils to Fossil Fuels
Kristen Anthony (The Huntington Library, Art Museum, and Botanical Gardens)
Respondent: **Michele Currie Navakas** (Miami University)

1:30 – 2:50 PM
San Gabriel

P13. Refusing Foreclosures and Endings: 19C Women Writers’ Defiance, Persistence, and Resilience
Chair: **Christina Katopodis** (Graduate Center, CUNY)

Margaret Fuller and the Ends of Immigrant Inclusion
Leslie Eckel (Suffolk University)

Feminist Kill(ed) Joys: Woman’s Health and Feminist Resistance in *The Una* (1853–55)
Alice De Galzain (University of Sussex)

Going Beyond: Cross-cultural Literary Adventure of Rebecca Rush and Lydia H. Sigourney
Rowshan Chowdhury (University of Massachusetts, Amherst)

Mirrored in Miranda: Margaret Fuller’s Intertextual Dialogues with Paternal Legacies and Male Discourses in “The Great Lawsuit”
Manzar Feiz (University of Texas, Dallas)

“Still-Born Aspirations:” Mothers of Stone in Elizabeth Stuart Phelps’s *The Story of Avis*
Madeline Olley (Syracuse University)

Defiant Friendship: Female Intersubjectivity in the 19th Century Asylum
Elisabeth Harris (University of North Carolina, Chapel Hill)

1:30 – 2:50 PM
Arcadia

P14. Democratic Affects & Personalities
Chair: **Michelle Sizemore** (University of Kentucky)

Democratic Vengeance: Racial Injury, Revenge, and Balance in *The Life and Adventures of Joaquín Murieta*
Carrie Hyde (UCLA)

Otranto-ish: The Political Ends of Remaining “purposefully blind” in *Cecil Dreeme*
Laurel Hankins (University of Massachusetts, Dartmouth)

The Savor of the Supernatural: Incomprehensible Feelings and Democratic Facts in *The Marrow of Tradition*
Jennifer Greiman (Wake Forest University)

“So many nerves to sting them to pain”: The Democratic Autonomy of Affect in “Life in the Iron-Mills”
Alp Eren Pirli (Indiana University, Bloomington)

Comic Feelings: Theater Discourse in the Early United States
Emily Banta (Texas State University)

City of Orgies: Walt Whitman in New Orleans
Stefan Schöberlein (Texas A&M University–Central Texas)

1:30 – 2:50 PM
San Rafael

P15. The End of the Survey? New Approaches to Courses: A Roundtable
Chair: **Rodrigo Lazo** (Univ of California, Santa Cruz)
Joseph Rezek (Boston University)
Jennifer James (George Washington University)
Sandra Gustafson (University of Notre Dame)
Michael Everton (Simon Fraser University)
Laura Mielke (University of Kansas)
Robert Levine (University of Maryland)

1:30 – 2:50 PM
San Pascual

P16. The Ends and Means of the Divine
Chair: **Carrie Bramen** (University at Buffalo)

Ruiz de Burton’s Novels: Beginnings or Endings?
Sara Flores (Washington University in St. Louis)

Narration as Revelation
John Hay (University of Nevada, Las Vegas)

The End Justifies the Means: Jesuitical Pragmatism in Political Theology during the Long Nineteenth Century
Steven Mailloux (University of California, Irvine)

The Double Voice of Black Christian Womanhood in *The Life and Religious Experience of Jarena Lee*
Jimmy Worthy II (University of Massachusetts Amherst)

1:30 – 2:50 PM
Leishman

P17. Imperial and Settler Colonial Violence in California
Chair: **Keri Holt** (Utah State University)

Germes, Seeds, and California: James Monroe Whitfield’s Black Emigration Ecologies
Eunice Toh (Penn State University, University Park)

For Five Dollars a Head: The California Genocide in Narration
Brandi Bushman (Princeton University)

Empire’s Afterlives and the Ends of Narrative in Frank Norris’s *McTeague*

Gary Totten (University of Nevada, Las Vegas)

The (Un)Happy Ending: Networks of Violence and the Settler Colonial Marriage Plot in Mary Hallock Foote’s “In Exile”

Emma Zumbro (University of California, Davis)

Respondent: Vincent Pérez, University of Nevada, Las Vegas

3:00 – 4:20 PM
San Rafael

P18. Melville’s Queer Afterlives

Chair: Dana Luciano (Rutgers University)

Moby-Dick from Below: Fans, Fictions, and Ship Theory

Chip Badley (University of California, Davis)

On Pola X and *Beau Travail*

Joseph A. Boone (University of Southern California)

All End the Family: Melville, Incest, and Humor

Adam Fales (University of Chicago)

Melville’s Childlessness

Nat Hurley (Memorial University)

Ahistoricity as Queer Method in *Our Flag Means Death*

Grace King (Penn State University)

Melville, Sendak, *Pierre*, and *Pierre*

Dana Seitler (University of Toronto)

Three Poems

Andie Sheridan (University of Massachusetts, Boston)

Sex in Translation: Melville, Mayoux, Ashbery

Jordan Alexander Stein (Fordham University)

3:00 – 4:20 PM
San Pascual

P19. Reimagining the “Ends” of Disability: Literary Experimentation and Resistance in the Long Nineteenth Century

Chair: Clare Mullaney (Clemson University)

“The Invalid Bachelor in the Adjoining Room”: Ending Normalcy and Recovering Disability

Vivian Delchamps (Dominican University)

Alice Dunbar Nelson and Pauline Hopkins’s Editorial Practices and the Ends of Print

Clare Mullaney (Clemson University)

“His Mission to Free the World”: Madness and the Ends of Slavery

Lindsey Grubbs (Case Western Reserve University)

The Ends of Illness: The Poetics of Social Reform in the Long Nineteenth Century

Sarah Nance (United States Air Force Academy)

3:00 – 4:20 PM
Leishman

P20. Caste, Class, and Race: An Open-Ended Literary History

Chair: Susan Gillman (University of California, Santa Cruz)

A Grammar of Motives: Nineteenth-Century Abolitionist Rhetoric and the In/Equivalent Forms of Race and Caste

Ivy Wilson (Northwestern University)

Caste and Untranslatability

Laura Brueck (Northwestern University)

Casta, Unfixed

David Kazanjian (University of Pennsylvania)

Continuities of Caste and *Casta*: Integrating Latinidad into US Racial Discourse

Kirsten Silva Gruesz (University of California, Santa Cruz)

Race, Caste, and Failures of Comparison

Yogita Goyal (University of California, Los Angeles)

3:00 – 4:20 PM
Arcadia

P21. Means and Ends: Nineteenth-Century Authorship and the Twenty-First-Century Writing Classroom: A Roundtable

Chairs: Ami Yoon (Baruch College, CUNY) and Rachael DeWitt (Columbia University)

Ami Yoon (Baruch College, CUNY)

Rachael DeWitt (Columbia University)

Max Chapnick (Northeastern University)

Benjamin Pokross (Gilcrease Museum)

Sri McCall (University of California, Irvine)

Jay Grossman (Northwestern University)

3:00 – 4:20 PM
San Gabriel

P22. Ways of Life: Writing C19 Biology

Chair: Jess Libow (Haverford College)

Hector St. John Crèvecoeur and the Ends and Means of Bees

Sheila Byers (Columbia University)

Biology Against Finality: Thoreau’s Lamarckian Design

Lynn Wardley (Independent Scholar)

The Ends of Travel

Andrew Bishop (University of Texas)

Birth Work and Alternative Energy Politics in the Circum-Caribbean

Mary Grace Albanese (SUNY Binghamton)

4:40 – 6:00 PM
San Rafael

P23. C19 Americanists and Critical University Studies
Chair: Marcy Dinius (DePaul University)

From Field to Ground, or A Story of Experience
Sarah Blackwood (Pace University)

The Colonial Corporate University
Peter Jaros (Franklin & Marshall College)

The C19 Origins of Race, Class, and Psychological Issues in the Professoriate and Thoughts Toward Overcoming Them
Christopher Newfield (University of California at Santa Barbara)

Academic Prestige vs. Public Participation in the C19
Matt Seybold (Elmira College)

“It’s Barely Even Awake”: Slavery, Abolition and Public Education
Wendy Tronrud (Queens College and The Graduate Center)

Wayward Forms
Gretchen Woertendyke (University of South Carolina)

4:40 – 6:00 PM
San Gabriel

P24. Material Ends: Encountering Collections
Chair: Julia Dauer (Saint Mary’s College (Notre Dame, IN))

Thomas Pole and the Ends of Collections
Rebecca Rosen (Murray State University)

Broken Stars, Faded Suns: Theorizing the Ends of an Archive
Allison Fulton (University of California, Davis)

Taxidermy’s Traces: The Afterlives of Martha Maxwell’s Animal Collection
Elizabeth Young (Mount Holyoke College)

Queen Lili’uokalani as House Museum Curator: Mount Vernon, Royal Hawaiian Sovereignty, and the Archive of Washington Place
Lisa McGunigal (Missouri Southern State University)

4:40 – 6:00 PM
Leishman

P25. William Wells Brown as a Man of Letters
Chair: Joe Conway (University of Alabama in Huntsville)

Decolonizing Black Male Resistance in the Nineteenth Century: Humor as Masculine Strategy in William Wells Brown’s *The Escape; or, A Leap for Freedom*
Alonzo Smith (Appalachian State University)

The Conjure Man Versus the Race Man
Corey D. Greathouse (Austin Community College)

Nat Turner’s Revolt and Clotel/le’s Escape: Gendered, Geographical Enclosure and Freedom in the Works of William Wells Brown
Courtney Murray (Pennsylvania State University, University Park)

Brown, the Archive, and Antebellum Print Culture: *Clotel’s* Early Critique of Anti-Black Lynching
John Cyril Barton (University of Missouri, Kansas City)

4:40 – 6:00 PM
San Pascual

P26. Rocky Pasts and Uncertain Futures: Earth Science in Nineteenth-Century Literature
Chair: Sara Jane Monahan (University of Wisconsin–Eau Claire)

Thoreau’s Stratigraphic Thought: Geology, Mythology, and Reform
Patrick Morgan (University of Louisiana)

The Ends of the Earth: The Archipelagic Imagination in Early C19 Boston
Betsy Klimasmith (University of Massachusetts, Boston)

Volcanic Visions: Melville’s *Mardi* and the Unstable Earth
Jeffrey Adams (Syracuse University)

Hawthorne and the (Ongoing) Age of Coal
Annie Persons (University of Virginia)

4:40 – 6:00 PM
Arcadia

P27. Print Culture’s Endings: Alienated Authors, Outmoded Technologies, and Defunct Publications
Chair: Cynthia Patterson (University of South Florida)

The End of the Author
Sandra Tomc (University of British Columbia)

Print’s Role in The End of Print
Graham Thompson (University of Nottingham)

The End of the *Century Illustrated Monthly Magazine*
Jayne Yahr (Carpinteria Valley Museum of History)

Print Ends: The *Advocate* as Social Process in Alice Dunbar-Nelson’s *Diary*
Alice Martin (Rutgers University)

8:00 – 9:20 AM
Leishman

P28. Black Writing Networks
Chair: **Elissa Zellinger** (Texas Tech University)

Pastoral Protest in *Les Cenelles* [*The May Haws*]: Writing and Community in New Orleans
Faith Barrett (Duquesne University)

Print Citizenship in the Diary of William T. Johnson, Free Man of Color
Erica Stevens (Houston Community College)

Harriet Jacobs, *Incidents*, and Black Elite Readers
April Logan (Salisbury University)

“I was wondering where the ‘black girls’ were”: Literary Mentorship in *The Christian Recorder*
Cora Anthony (University of Illinois, Urbana-Champaign)
Respondent: **Elissa Zellinger** (Texas Tech University)

8:00 – 9:20 AM
San Pascual

P29. Mark Twain’s Illiberal Imagination
Chair: **Matt Seybold** (Elmira College)

Caste Studies in Mark Twain’s *Following the Equator*
Susan Gillman (University of California, Santa Cruz)

The Best Defense is a Good Offense: Mark Twain and the Art of Trolling
Elizabeth Cantalamessa (University of Miami)

Criminalis Sequitur Ventrum: Post-Slavery Discipline’s Myths of Origins
Henry Washington, Jr. (Wesleyan University)

Finding Bodies in *The Adventures of Tom Sawyer*
Shirley Samuels (Cornell University)

Evasive Details
Jamie Luis Parra (Skidmore College)

The Modernity of *No. 44, The Mysterious Stranger*
Timothy Donahue (Oakland University)

8:00 – 9:20 AM
San Rafael

P30. The Ends of the Body
Chair: **Justine Murison** (University of Illinois, Urbana-Champaign)

Haptic Therapeutics
Matthew Rebhorn (James Madison University)

The Odds and Ends of the Body
Sarah Chinn (CUNY-Hunter College)

There is More than One Way to be Healthy: Markets and Multitudes in Nineteenth Century America
Heather Chacon (Greensboro College)

Insurgent Extremities: Slavery, Disability, Anarchic Flesh
Maurice Wallace (Rutgers University)

“Munching” with Henry James: Eating and the Regulation of Bodies
Thomas Constantinesco (Sorbonne Universite, Paris)

The Ends of the Black Body in American Literature
Cherene Sherrard-Johnson (Pomona College)

Ephemeral Gender and the Bounded Body
Kadin Henningsen (University of Illinois, Urbana-Champaign)

8:00 – 9:20 AM
San Gabriel

P31. Whitman’s Endless Manuscripts: New Research from the Oxford Handbook of Walt Whitman
Chair: **Stefan Schöberlein** (Texas A&M University–Central Texas)

Taking a Page Out of Whitman’s Scrapbook: Deconstructing and Reconstructing the Poet’s Composition Process
Kevin McMullen (University of Nebraska–Lincoln)

Color Processing
Blake Bronson-Bartlett (University of California, Berkeley)

Making the Cut: Whitman’s Excisions
Caterina Bernadini and **Kenneth M. Price** (University of Nebraska–Lincoln)

9:30 – 10:50 AM
San Rafael

P32. On the Receiving End: Queering Reception History
Chair: **Maria Kane** (Washington University in St. Louis)

Cranial Nonconformity: The Queer Reader of Popular Science
Rachel Walker (University of Hartford)

On The Use and (Self) Abuse of Literature for Life; or, Nineteenth-Century Spank Banks
Greta LaFleur (Yale University)

The Autoreceptive Uncanny: Whitman, Dickinson, James, Fields
Don James McLaughlin (University of Tulsa)

The Phenomenology of the Phallus: Archival Affects and the Hunt for Sexuality
Ben Bascom (Ball State University)

9:30 – 10:50 AM
Leishman

P33. The Ends of the Earth: Affective Geographies and Creative Ecologies in the Long 19th Century
Chair: **Janet Neary** (CUNY-Hunter College)

Figure-Ground: Grafton Tyler Brown and the Visual Culture of Mining

Janet Neary (CUNY-Hunter College)

Endless Beginnings in the Unpublished Work of W.E.B. Du Bois

Autumn Womack (Princeton University)

Notes on the Limits of the Sea

Lindsay Reckson (Haverford College)

In the Woods: Contesting Place in the Early Women’s Reformatory

Emily Hainze (Georgetown University)

“We will dance the hoochee koochee”: Opting Out in Popular Song, or, the Migrations of Little Egypt

Sara Marcus (University of Notre Dame)

9:30 – 10:50 AM
San Pascual

P34. Endless Literary Productions and Ongoing Multiplicities

Chair: Thomas Howard (Bilkent University)

Origins of the Endless Franchise: Street and Smith’s Nick Carter and The Shadow

Nathaniel Williams (University of California, Davis)

Sophia Buell’s Endless Gathering: Piecing Together Self and Community through Material Culture

Mariah Kupfner (Pennsylvania State University, Harrisburg)

Edgar Allan Poe, Mat Johnson, and the Endlessness of Whiteness

Matt Steinhafel (Catholic University of America)

Amid Apocalypse: Speculative History and the Persistence of the Past in Du Bois’s *Darkwater*

Justin Chandler (Georgia Institute of Technology)

9:30 – 10:50 AM
San Gabriel

P35. New Readings of Harriet Wilson

Chair: Nancy Bentley (University of Pennsylvania)

“The victim of consumption”: Blackness, Disease Transmission, and the Dead End of American Inheritance in Harriet Wilson’s *Our Nig*

Jorden Sanders (Rutgers University, New Brunswick)

End of the Road: Domestic Abuse and the Figure of the Picara in Harriet Wilson

Emily Mulvihill (University of California, Riverside)

“Forced to Some Experiment”: Frailty and Health in Harriet E. Wilson’s *Our Nig: Sketches from the Life of a Free Black*

Rudrani Sarma (Rutgers University, New Brunswick)

Prefaces and the Ends of Literature: Two Case Studies

Blevin Shelnutt (Vassar College)

9:30 – 10:50 AM
Arcadia

P36. Dying Arts

Chair: Madeline Zehnder (Humboldt-Universität zu Berlin)

Black Voice and the End of George Moses Horton’s Naked Genius, as Told by Mary Todd Lincoln

Robert Arbour (Spring Hill College)

A Drink to the End of Life: Bodysnatching, Temperance, and Rot-Gut Whiskey

Rebecca Haddaway (Penn State University, University Park)

Refusing Endings: Frederick Goddard Tuckerman’s Grief Poetry

Carlee Montgomery (University of California, Santa Barbara)

The End of Walt Whitman

Kelsey McQueen (The University of Georgia)

11:00 AM – 12:20 PM
San Pascual

P37. Black Insurgencies

Chair: Mary Grace Albanese (SUNY Binghamton)

Pierre Eugène du Simitière and the Archive of Slave Insurrection

Alex Mazzaferro (University of California, Los Angeles)

Tools as Insurgent Ends in Slave Revolts

Hampton Smith (Massachusetts Institute of Technology)

“An Unaccountable Consciousness”: Thomas Hamilton’s Ends in *The Anglo-African Magazine*

Charline Jao (Cornell University)

11:00 AM – 12:20 PM
San Gabriel

P38. C19-C20-C21: Revisions, Distortions, Adaptations

Chair: Elizabeth Duquette (Gettysburg College)

Two Whales

Rita Bode (Trent University)

His Alpha Meets Her Omega: The “Mutual Service” of Charlotte Perkin Gilman’s Suicide and Kehinde Wiley’s Empathic Renderings of “The Yellow Wallpaper”

Mary-Antoinette Smith (Seattle University)

Endings after the Ending: Jim’s Afterlives on the Dnieper and the Danube

Shelley Fishkin (Stanford University)

The Political Ends of Emma Lazarus’ “New Colossus”

Nathaniel Cadle (Florida International University)

11:00 AM – 12:20 PM
Leishman

P39. Indigenous Environments and Catastrophic Change
Chair: Rio Bergh (Northwestern University)

“The Cyclone of Civilization”: The Language of Environmental Catastrophe in The Red Man’s Greeting
Rio Bergh (Northwestern University)

Peacemaker Technologies: The Seminole and the Settler Origins of American Handgun Culture
Gordon Fraser (University of Manchester)

The Spatial Justice of Paper
Amy Gore (North Dakota State University)

Chief Seattle and the Uses of Lumber
Lloyd Sy (Yale University)

11:00 AM – 12:20 PM
San Rafael

P40. “The End” in Historical Fiction of and about the Long Nineteenth Century
Chair: DeLisa Hawkes (University of Tennessee, Knoxville)

From History to Catastrophe: Cooper’s Ecogothic Fatalism
Kate Huber (University of Central Oklahoma)

Twaining Twain: Unhinging the Biological from the Cultural in Charles Chesnutt’s *The Marrow of Tradition* and Paul Laurence Dunbar’s *The Fanatics*
Tom Morgan (University of Dayton)

The Pariah of “Miss”: A Fictionalized Glimpse of Black Enslaved Wives
DeLisa Hawkes (University of Tennessee, Knoxville)

What Is a Neo-Slave Narrative, if Not a Revolution?: Critical Fabulation and the Cognitive Dissonance of Open Endings
Allison Harris (University of North Carolina, Wilmington)

New Novels About Slavery in the Twenty-First Century
Mark Eaton (Claremont Graduate University)

11:00 AM – 12:20 PM
Arcadia

P41. Modes of C19 Authorship
Chair: Blevin Shelnutt (Vassar College)

Relationality and Gathering in Ann Plato’s Poems
Magdalena Zapędowska (Smith College)

Plagiarized Authenticity in Havana and New Orleans: Cuba, Louisiana, and the Gulf of Mexico System
Leslie Bary (University of Louisiana)

Poetry in the Wake: Herman Melville’s Reconstructive Poetics
Alexander Ashland (Viterbo University)

Stephen Crane’s Black Riders and Automatic Writing: Rehearsing the End of Authorship
Jordan Williamson (University of North Carolina at Chapel Hill)

1:30 – 2:50 PM
Leishman

P42. Poetic Theory in the C19 US – Poetics of the Everyday
Chair: Meredith McGill (Rutgers University, New Brunswick)

From Botanizing to Poeticizing: Antebellum Women’s Poetry Books and US Print Culture
Ami Yoon (Baruch College, CUNY)

The Poetics of Dehiscence
Sean Gordon (California State University, Fresno)

Poetics at the Breakfast Table
Benjamin Friedlander (University of Maine)

Oliver Wendell Holmes, Sr. and the Phenomenology of Meter
Josh Doty (St. Mary’s University, San Antonio)

A Look at Lucy Larcom’s *Landscape in American Poetry*
Caroline Gelmi (University of Massachusetts, Dartmouth)
Respondent: Meredith McGill (Rutgers University, New Brunswick)

1:30 – 2:50 PM
San Rafael

P43. Trans Childhoods
Chair: Bryce Traister (University of British Columbia)

Neuro-Trans Childhoods: Neurodivergence and Transition beyond Transatlantic Maladjustment
Kate Singer (Mount Holyoke College)

Girl-Boys
Travis Foster (Villanova University)

Familial Cross-Dressing in *Theresa* and *Lucy Nelson*
Sarah Sillin (Central Washington University)

Cherry-boys and Mast-men: A Trans Deliverance of Captain Gardiner’s Child
Will Younts (North Carolina State University)

Magnetism and the Strange Child: Spiritualist Prehistories of Transness in *Cecil Dreeme*
Eagan Dean (Rutgers University, New Brunswick)

1:30 – 2:50 PM
San Pascual

P44. Black Speculative Imaginaries at the End(s)
Chair: Edlie Wong (University of Maryland, College Park)

Speculating from the Precipice of a Cataclysm: William J. Wilson and Late Antebellum Aesthetics
Britt Rusert (University of Massachusetts, Amherst)

Speculative Citizenship: Edward A. Johnson’s *Light Ahead for the Negro*
Annemarie Ewing (University of Maryland, College Park)

Falling Houses: *Linden Hills* and Poe’s Legacy in Black Women’s Speculative Fiction
Cherene Sherrard-Johnson (Pomona College)
Respondent: **Edlie Wong** (University of Maryland, College Park)

1:30 – 2:50 PM
Arcadia

P45. Mediating Indigeneity/Indigenous Mediations
Chair: **Ittai Orr** (University of Michigan)

Manabozho in the Nineteenth Century
Maureen Konkle (University of Missouri)

Tracking Translation: Cibola and the Seven Cities of Gold in the Nineteenth-Century US
Keri Holt (Utah State University)

“Real life or long lasting death”: The Centrality of the Indigenous Girl’s Body to Cultural Survival in Assimilation-Era Literature
Ariel Little (University of British Columbia)

Toward an Indigenous Sound Ecology: Resisting White Sonic Occupation in the Works of Black Hawk and Jane Johnston Schoolcraft
Christina Katopodis (Graduate Center, CUNY)

1:30 – 2:50 PM
San Gabriel

P46. The End of the Union, the End of Slavery: Harriet Beecher Stowe and the Long Civil War
Chair: **Robert Levine** (University of Maryland, College Park)

Sacrificial Sons
Claudia Stokes (Trinity University)

Stowe’s Sojourner Truth before and during the Civil War
Xiomara Santamarina (University of Michigan)

A Little Sketch about Tyranny
Elizabeth Duquette (Reed College)

Stowe in the Age of Comstock
Justine Murison (University of Illinois, Urbana-Champaign)

Chesnutt, Stowe, and “The End”
Melissa Daniels-Rauterkus (University of Southern California)

3:00 – 4:20 PM
San Rafael

P47. Confronting the Ends of C19 Black and Latinx Archives
Chair: **Uri McMillan** (University of California, Los Angeles)

The Absent Black Body in the Afterlives of Slavery
Danielle Bainbridge (Northwestern University)

The Unnamed and their Namesake: Anonymous Black Life and White Archiving in the Randolph Linsly Simpson Collection
Camille Owens (McGill University)

Reconstructing C19 Latinx Performance Histories: A Digital Approach
Christofer Rodelo (University of California, Irvine)

Martin Morua Delgado’s Encounter with African American Thought: A Cuban Expatriate in the United States
Gema Guevara (University of Utah)

3:00 – 4:20 PM
Leishman

P48. How the Story Ends
Chair: **Arielle Zibrak** (University of Wyoming)

“The Offspring of the Ocean”: Woolson’s “Felipa” and the Ends of Coastal Tourism
Sari Edelstein (University of Massachusetts, Boston)

Uncertainty, Reconstruction, and the Troubling Ending of Thomas Detter’s “Octoroon Slave of Cuba”
Maria A. Windell (University of Colorado Boulder)

Dear God, Make It Stop; or, Ableism and Why Victor’s “The Skeleton at the Banquet” Has Far Too Many Endings
Jessica Horvath Williams (University of Minnesota, Twin Cities)
Chair: **Arielle Zibrak** (University of Wyoming)

3:00 – 4:20 PM
San Pascual

P49. Material Ends: Counterhistories
Chair: **Rebecca Rosen** (Murray State University)

Portraits, Shadows, and Legacies: Deyaha and the Perkins Family
Christina Michelin (Boston Athenaeum)

At the Bottom of Diamond Lake: Tobacco Archives at the End
Julia Dauer (Saint Mary’s College)

The Politics of Memorialization: Remembering the Dead in Nineteenth-Century New York Cemeteries
Philippa Chun (Rowan University)

Acting Out Alternatives: Surviving Theft and Collection
Kimberly Takahata (Villanova University)

3:00–4:20 PM
San Gabriel

P50. Transpacific Encounters
Chair: Spencer Tricker (Clark University)

Transpacific Transits, Radical Encounters: Anticolonial Readership and Affinity between the Nineteenth-Century USA and India
Shaibal Dev Roy (University of Southern California)

The Anatomy of Colonization: Indigenous Hawaiian Health and the Ends of Medicine
Juliane Braun (Auburn University)

“A dose of laudanum to prevent abortion”: Aborted Endings, Pain, and Colonial South Asia in Nineteenth-Century America
Adrita Mukherjee (University of California, Riverside)

A Prophecy at the End of a Journey: Mark Twain’s *Letters from Hawaii* and the First Japanese Immigrants in Hawaii
Yui Kasane (University of California, San Diego)

4:40–6:00 PM
San Rafael

P51. Lost Objects/Dead Ends: Absence as Method, Loss as Archive
Chair: Stephanie Foote (West Virginia University)

Basket: The “Lone Woman of San Nicolas Island”; or, The Female Robinson Crusoe
Hester Blum (Penn State University, University Park)

Newsprint: Lost Fiction from Black LA
Jennifer S. Tuttle (University of New England)

Miser: From Jevons Paradox to *Jevons Block*: Energy/Entropy/Eros
Frank Ridgway (University of Cincinnati)

Door: Anatomy of a Forgotten Object
Stefanie Sobelle (Gettysburg College)

Mail: Lost Letters and Postal Systems
Hollis Robbins (University of Utah)

4:40–6:00 PM
Arcadia

P52. The Archive of Alternative Endings: Disruptive Temporalities and Unfinished Reading
Chair: Bridget Bennett (University of Leeds)

Public Intimacies and the Creation of the Black Home: The Letters of Thomas H. Jones and Mary Rynar Jones
Bridget Bennett (University of Leeds)

Using/Refusing Phillis Wheatley Peters’s Poems in the Nineteenth-Century US
Clare Elliott (Northumbria University)

Forgotten, or Refused? Black Thinking before Du Bois — a Recovered Tradition in the French and Transatlantic Context
Cécile Roudeau (Paris Diderot University)

Whose Freedom? Moses Roper’s Fugitive Family and the Practices of Emancipation
Fionnghuala Sweeney (Newcastle University)

4:40–6:00 PM
San Gabriel

P53. Predicting the End
Chair: Katherine Chiles (University of Tennessee, Knoxville)

The Black Son of Christ: Christopher McPherson’s Nineteenth-Century Apocalypticism
Mélena Laudig (Princeton University)

Astrological Prophecies of Doom: Almanacs as Disaster Writing in the Nineteenth Century
Carrie Bramen (University at Buffalo)

“Races Perish”: Utopian Visions of Negro Disappearance
Joan Bryant (Syracuse University)

4:40–6:00 PM
San Pascual

P54. Post-Work Possibilities: On Labor and Resistance
Chair: Sarah Chinn (CUNY-Hunter College)

The End(s) of Work in Alcott’s Fiction and Personal Narrative
Lauren Bunce (Princeton University)

Contested Subjects: Working-Class Whiteness in Antebellum Popular Fiction
Tim Helwig (Furman University)

Negation or Invention? The End(s) of Queer Resistance in Melville’s “Bartleby, the Scrivener”
Paul Jones (Ohio University)

Doing Less at the End of the World: C19 Literature and Hustle Culture
Elizabeth Hopwood (Loyola University)

4:40–6:00 PM
Leishman

P55. Anglo-African Afterlives in the Transatlantic Nineteenth Century
Chair: Alisha Knight (Washington College)

Martin Delany, the End of *Blake*, and the Anglo-African Routes of West African Cosmopolitanism
Ira Dworkin (Texas A&M University)

The Lagos Afterlives of Nineteenth-Century American Texts
Marina Bilbija (Wesleyan University)

Architectural Lives of Lagos Newspapers: Ornamental Words and Buildings
Adedoyin Teriba (Dartmouth College)
Respondent: Alisha Knight (Washington College)

8:00 – 9:20 AM
San Pascual

P56. Death in Public
Chairs: **Lucy Wallitsch** (Emory University) and Alex Anderson (Purdue University)

“Without Volition”: Capacity and Culpability in the Trial of *Billy Budd, Sailor*
Lucy Wallitsch (Emory University)

E. E. Barclay and the Business of Making Murder Public
Paul Erickson (University of Michigan)

The Residential School and Zitkala-Ša’s Indigenous Gothic
Alex Anderson (Purdue University)

Queer Deaths and Neighborly Hauntings in Mary E. Wilkins Freeman’s Supernatural Fiction
Jana Tigchelaar (Marshall University)

8:00 – 9:20 AM
San Gabriel

P57. Rising from the Humanities’ Ruins: A Roundtable on Experimental Histories from Below
Chair: **Jordan Stein** (Fordham University)

Louise Michel in America: Nineteenth-Century Radical World-Making
J. Michelle Coghlan (University of Manchester)

The Hidden Town Project: Documentaries on the History of Slavery in Salem, NC, Created by Students and Community Partners
Meredith Farmer (Wake Forest University)

Student Orientation, C19 Style: Teaching Local Indigenous and Settler-Colonial History through the Historical Romance
Jared Hickman (The Johns Hopkins University)

Narratives of Value: Why Universities Cut the Humanities and What We Can Do About That
Alexandra Socarides (University of Missouri)

Practices for Different Ends: How the Humanities Can Work in an Era of Crisis
Molly Hiro (University of Portland) and Jen McDaneld (University of Portland)
Respondent: **Jonathan Schroeder** (Brandeis University)

8:00 – 9:20 AM
Arcadia

P58. Kind Encounters in End Times
Chair: **Theo Davis** (Northeastern University)

Rebecca Harding Davis: The Sun To-Day
Theo Davis (Northeastern University)

Encountering the Divine: Interracial Love in Harriet Jacobs’s and Elizabeth Keckley’s Narratives
Allison Curseen (Boston College)

Melville’s Neutral Pessimism, or Lovingkindness without Use
Paul Hurh (University of Arizona)

Marx and the Encounter with Depletion
Ingrid Diran (University of Wisconsin Madison)

Kindness in the (Mail)Path of Empire
Christy Pottroff (Boston College)

Mizora and the Tyranny of Kindness
Stacey Margolis (University of Utah)

8:00 – 9:20 AM
Leishman

P59. Can Race Ever Be Represented? A Roundtable on Race in American Literature
Chairs: **Jean Pfaelzer** (University of Delaware) and **John Ernest** (University of Delaware)
Jean Pfaelzer (University of Delaware)
John Ernest (University of Delaware)
Valerie Babb (Emory University)
Rene Dietrich (Catholic University of Eichstätt-Ingolstadt)
Renee Hudson (Chapman University)

8:00 – 9:20 AM
San Rafael

P60. The New Nineteenth-Century American Literary Studies
Chair: **Russ Castronovo** (University of Wisconsin–Madison)

Harriet Wilson’s Lessons: Disability and Nineteenth-Century American Literature
Sari Altschuler (Northeastern University)

Reconstructing American Poetry: William Cullen Bryant Translates the *Iliad*
Michael Cohen (UCLA)

The Black Formalist Tradition in the First Civil Rights Movement
Jeannine DeLombard (University of California, Santa Barbara)

Transitioning Queer Studies in Nineteenth-Century American Literature
Ren Heintz (California State University, Los Angeles)

The Political Functions of Reconstruction Literature, Then and Now
Gregory Laski (United States Air Force Academy)

Grounding Nineteenth-Century Studies in Indigenous Studies
Katie Walkiewicz (University of California, San Diego)

“Unfeeling Stone”: Rethinking Sentimentality at the Heart of Nineteenth-Century American Literary Studies
Xine Yao (University College London)

9:30–10:50 AM
San Rafael

P61. Infrastructure, Form, and the End(s) of Extractive Capitalism
Jennifer James (The George Washington University)

“The Rest Are Run Over”: Planes, Trains, and the End(s) of Capitalism
John Levi Barnard (University of Illinois at Urbana-Champaign)

Melville’s “The South Seas” and the End of the Pacific
Andrew Kopec (Purdue University Fort Wayne)

Purchasing Power: Environmental Domesticity, White Femininity, and the Enduring Myth of Ethical Consumption
Leah Becker (University of Illinois at Urbana-Champaign)

Commodities, Literature, and Externalities: The Case of Regional Fiction
Stephanie Foote (West Virginia University)

The Ends of Trees: Lydia Maria Child and the “Uses to Which Trees are Devoted”
Melissa Gniadek (University of Toronto)

9:30–10:50 AM
Leishman

P62. “Will you finish your story?”: A Roundtable on Trans and Intersex Studies After Twenty Years of Julia Ward Howe’s “Laurence”
Chairs: Kadin Henningsen (University of Illinois at Urbana-Champaign) and Eagan Dean (Rutgers University, New Brunswick)

“[Y]our feeling...may soften with time”: Recovering an Intersex Genealogy across Deep Time in “Laurence”
Bill Hunt (Barton College)

The Nursery Hermaphrodite: A Queer Reading of Laura Richards’ “My Japanese Fan”
Etti Gordon Ginzburg (Oranim College)

Grotesque as Method: The Gothic in The Hermaphrodite
Lawrence Lorraine Mullen (University of Buffalo)
Respondent: Karen Sánchez-Eppler (Amherst College)

9:30–10:50 AM
San Pascual

P63. Methods for Unending History from William Still’s *Underground Rail Road* (1872)
Chair: Derrick Spires (University of Delaware)

Collective Memory in *The Marrow of Tradition*
RJ Boutelle (University of Cincinnati)

Magical Realist Railroads
Brigitte Fielder (University of Wisconsin Madison)

“The Story Was Painful to the Ear”: Antebellum Testimony in *The Underground Rail Road*
Mikala Stokes (Northwestern University)

Possibilities and Problems in Publishing Collective Histories
Darby Witek (University of Delaware)

Intimate yet Public: Making Black Historiography
Jewon Woo (Lorain County Community College)

9:30–10:50 AM
Arcadia

P64. Genres of Black Resistance
Chair: Kelly Ross (Rider University)

Remnants of Fugitivity
Ajay Batra (Vanderbilt University)

The Slave Pass as Literary Genre
Susanna Ashton (Clemson University)

Allan Pinkerton, the Underground Railroad, and Postbellum Detective Fiction
Kelly Ross (Rider University)
Respondent: Susan Ryan (University of Louisville)

9:30–10:50 AM
San Gabriel

P65. Waves, Caves, and Edge Worlds
Chair: Judith Madera (Wake Forest University)

World Upside Down: Heavens on Earth in the American West
Shundana Yusaf (University of Utah)

When Edge Becomes Center: The Place of Indigenous Drawing in the Coast Survey Archive
Kimia Shahi (University of Southern California)

Caribbean Edge Worlds
Judith Madera (Wake Forest University)

“The Heart of Africa” in the Shadow of Early Zionism: Pauline Hopkins’s Telassar
Lara Cohen (Swarthmore College)

Matthew Henson: Race, Sexuality, and the Problem of Arctic Empire
Sandra Gunning (University of Michigan–Ann Arbor)

11:00 AM–12:20 PM
San Rafael

P66. Endings, Fracasos, and Latinx History/Futurity
Chair: Maria Windell (University of Colorado–Boulder)

Contrasting Fracasos & Failures: Or Why There’s No Such Thing as a Decolonial Past
José Aranda (Rice University)

On 1848 and/as Failures of Recognition
E. Mar García (Northeastern Illinois University)

Nineteenth-Century Latina/o Educators and Spanish-Language Textbooks

Carmen Lamas (University of Virginia)

Narratives of Creole Defects and Degeneracy

Evelyn Soto (Rutgers University)

Reactionary Whiteness: Latinx Literary Failures and Free Labor Ideology

Bernadine Hernández (University of New Mexico)

11:00 AM – 12:20 PM
Leishman

P67. Haunted Histories

Chair: Amanda Louise Johnson (Pitzer College)

“Horrible Nights” and “Strange Visitors”: How the American Civil War Haunted its Veterans

Amy Fluker (Youngstown State University)

Inconclusive Endings: 1880s and ‘90s Ghost Stories of the Transatlantic Slave Trade

Ellen Gruber Garvey (New Jersey City University)

Phantoms, Elves, and Shells: Reimagining the End in George Moses Horton’s Ghostlore

Tabitha Lowery (Coastal Carolina University)

The End of Ann Benedict

Ashley Reed (Virginia Tech)

11:00 AM – 12:20 PM
San Pascual

P68. The Ends of Anti-Black Violence

Chair: Koritha Mitchell (Ohio State University/Boston University)

The End(s) of Economies of Dispossession in Frank J. Webb’s *The Garies and Their Friends*

Maria Seger (University of Louisiana at Lafayette)

The Ends of Life: Speculative Vitalisms and Anti-Blackness

Matthew Taylor (University of North Carolina at Chapel Hill)

The “Ku Klux Spirit” and the Historicity of White Supremacist Violence in the Post-Reconstruction South

Aaron Jacobs (Brown University)

11:00 AM – 12:20 PM
Sierra Madre

P69. The End of the Line

Chair: Wendy Tronrud (Queens College and The Graduate Center, CUNY)

Wrestling with Neptune: Lyric Dissolution in Dickinson and Wheatley

Susannah Sharpless (Cornell University)

Formal and Ideological Ends of Aphorism in Nineteenth-Century Poetics

Max Cavitch (University of Pennsylvania)

Full Stops

Zachary Tavlin (School of the Art Institute of Chicago)

“My Heart Beats High With the Rushing Tide”: Desire and Animation in Dickinson and Dunbar-Nelson

Sharon Kunde (Duke University)

11:00 AM – 12:20 PM
Arcadia

P70. Social Constructions: Architecture, Real Estate, and Property Crime

Chair: Carrie Hyde (UCLA)

The End of the Boarding-House, and its Persistence: Tenancy, Race, and Narrative Closure in *Ruth Hall* and *Contending Forces*

Philip Ellefson (Northwestern University)

Tenement Stories: Fiction and the Forms of Poverty

Lori Merish (Georgetown University)

The End of the Architect? Speculative Building Robert Herrick’s *The Common Lot*, Edith Wharton’s *Sanctuary*, and Robert Grant’s *Unleavened Bread*

Tara Foley (Baylor University)

“I said ‘burglar,’ not ‘beggar’”: Burglary, Class, and Nationalism in U.S. Culture

Rebekah Aycock (University of Kansas)

11:00 AM – 12:20 PM
San Gabriel

P71. New Literary Histories of Racialization

Chair: Caroline Yang (University of Massachusetts Amherst)

Before the Line: Infrastructural Failure and Racial Capitalism in *The Squatter and the Don*

Daniel Myers (University of Illinois at Urbana-Champaign)

“Behold My Little Lamb”: Little Girls, Little Lambs, and Ending Animal Cruelty

Karah Mitchell (University of North Carolina at Chapel Hill)

The End of the Minstrel Form? The “Heathenest Chinees” in H. B. Farnie’s *Bluebeard*

Caroline Yang (University of Massachusetts Amherst)

Trafficking in Racial Redemption: Passing, Smuggling, and the Canadian Border in Sui Sin Far’s “Woo-Ma and I” and Charles Chesnutt’s “The Passing of Grandison”

Klara Boger (University of Michigan–Ann Arbor)

1:30 – 2:50 PM
San Pascual

P72. Textual Revisions and Editorial Ends: African American Literature in the Making
Chairs: **Marine Bilbija** (Wesleyan University) and Sarah Robbins (Tufts University)

Foreclosing Black Antisentimentalism, Recovering John Jacobs
Jonathan Schroeder (Brandeis University)

The “Value” of a Text Without an End: Interpretive Tensions in *The Bondwoman’s Narrative*
Gillian Wood (Tufts University)

Revision, Republication, and African American Autobiography
Bryan Sinche (University of Hartford)

The Ends of Emendation: Chesnutt’s “Lonesome Ben”
Sarah Wagner-McCoy (Reed College)
Respondent: **Sarah Robbins** (Tufts University)

1:30 – 2:50 PM
San Gabriel

P73. How It Ends in Florida
Chair: **Martha Schoolman** (Florida International University)

Unending Nostalgia
John Funchion (University of Miami)

The End of Abolition
Martha Schoolman (Florida International University)

The End of History and the Return of the Repressed
Brian Connolly (University of South Florida)

1:30 – 2:50 PM
Leishman

P74. Bad Feelings, Genre Experiments: Democracy, Negative Affects, and C19 American Literariness
Chair: **Alex Moskowitz** (Mount Holyoke College)

White Feelings, Bad Feelings: Counternarratives to Racial Domination in Charles Chesnutt’s *The Marrow of Tradition*
Will Clark (San Francisco State University)

Black Soldier Letters and Sutton Griggs’ *Imperium in Imperio*: The Politics of Alternative Nationhood and Imperialism in the Black Public and Literary Sphere
Efren Lopez (San Diego State University)

“Will you help us to enable them to hear the voice of the red man?”: The Right to be Heard in William Apess’s *Indian Nullification* and “Eulogy on King Philip”
Jené Pledger (UCLA)

Brown as Bad Faith: Arguing Around Richard Rodriguez
Sammy Solis (UCLA)
Respondent: **Daniel Couch** (U.S. Air Force Academy)

1:30 – 2:50 PM
San Rafael

P75. The End of the Human(ities)
Chair: **Courtney Murray** (Penn State University, University Park)

The End of the Disembodied Human: Corporeality and Health in Two Slave Narratives
Aïcha Bouchelaghem (University of Geneva)

Liminal Knowledge: Unlearning the Grammars of the Human(ities)
Luke Church (Graduate Center, CUNY)

Defending the Humanities Without Defending the Human
Jess Goldberg (New Mexico Highlands University)

On Black Feelings and End of the Human(ities)
Tenisha McDonald (Princeton University)
Respondent: **Kirsten Lee** (University of Pennsylvania)

1:30 – 2:50 PM
Arcadia

P76. Without Closure: Forms of Incompletion and Stasis
Chair: **D. Berton Emerson** (Whitworth University)

Unexpected Endings: Social Crisis, Form, and the Antebellum Fragment
Matthew Pethers (University of Nottingham)

Insurrection Interrupted: Ending Black Rebellion in Early American Literatures
Tim Bruno (Howard Community College)

Martin Delany, Harriet Beecher Stowe, and the Unimaginable Limits of Empire
David Brandt (Vanderbilt University)

Naturalism’s Missing Terminus: Reading the End(s) of Capital and the Nineteenth Century in Frank Norris’s *The Wolf*
Clinton Williamson (Boston University)

3:00 – 4:20 PM
Leishman

P77. New Beginnings in Harper Studies
Chair: **Utz McKnight** (University of Alabama)

“To Know Right from Left: Frances Harper, *Iola Leroy*, and a Linguistics of the Flesh”
Sarah Buckner (Allegheny College)

“A Shout of Triumph”: Frances E. W. Harper’s Concrete Utopias for the 21st Century”
M. Giulia Fabi (University of Ferrara)

Rhetorical Dilemmas: Reframing the Rhetorical Analysis through Civil Rights Artifacts in First-Year Writing Classrooms
Alexandra McCourt (University of California, Santa Cruz)

“A true artist”: Frances Harper’s Vision for Motherhood

Nicole Musselman (University of South Florida)

Dubious Bodies: Frances E.W. Harper’s Sociogenic Evolutions

Hyunjoo Yu (University of Puget Sound)

A True Artist Rising: Harper2025 Arts Initiative and Black Feminist Curatorial Practice

Brandi Locke (University of Delaware)

Respondent: Marlas Yvonne Whitley (New York University)

3:00 – 4:20 PM
San Pascual

P78. The End(s) of Women’s Archives

Chair: Kirsten Lee (University of Pennsylvania)

Nineteenth-Century African American Women’s Diaries and the Archival Lament

Jennifer Putzi (William & Mary)

Elegiac Disorientations

Maria Sanchez (University of North Carolina Greensboro)

The Books of Moses: Sarah Hopkins Bradford, Harriet Tubman, and Missing Archives

Mollie Barnes (University of South Carolina Beaufort)

Novelizing Women’s Archives: Carmen Boullosa and Nine-teenth-Century US Women Writers

Theresa Strouth-Gaul (Texas Christian University)

3:00 – 4:20 PM
San Rafael

P79. Gen Z & C19: A Roundtable on Affirming Student Scholars

Chair: Jess Libow (Haverford College)

Denise Burgher (University of Delaware)

Duncan Faherty (Queens College and The Graduate Center, CUNY)

Jess Libow (Haverford College)

Jean Lutes (Villanova University)

Trinity Rogers (Villanova University)

Laura Soderberg (University of Southern Indiana)

Sam Sommers (University of Connecticut)

3:00 – 4:20 PM
Arcadia

P80. Commerce, Consumption, and Complicity

Chair: Dan Farbman (Boston College Law School)

Consumption’s Grievous Entanglements

Erin Pearson (Elon University)

Uncle Tom’s House Divided: Domestic Institutions and the Arm of Commerce

Geoffrey Kirsch (Trinity College, University of Cambridge)

The Race of Commerce

Howard Horwitz (University of Utah)

Respondent: Dan Farbman (Boston College Law School)

3:00 – 4:20 PM
San Gabriel

P81. Finding Love and Desire in the Nineteenth Century

Chair: Sarah Mesle (University of Southern California)

Black Women’s Love and Ritual at the End of the World

Dana Murphy (California Institute of Technology)

How to Write a History of Latinx Desire

Raúl Coronado (University of California, Berkeley)

The End of Girlhood: Relationality and Self-Construction and -Effacement in *The Story of Mary MacLane*

Hannah Jakobsen (UCLA)

4:40 – 6:00 PM
San Pascual

P82. Weird California

Chair: Elizabeth Oliphant (Central New Mexico Community College)

Atlantis, Lemuria, California

Carie Schneider (Cameron University)

Saucer Shaped Lights Making People Uptight: The 1896–97 Air-Ship Craze, Edisonades, and Apocalyptic Technologies

Schuyler Chapman (Glenville State University)

Weird Education: The Raja Yoga School at Lomaland and the Professional Deformation of Literary Studies

Ashley Barnes (University of Texas, Dallas)

Respondent: Elizabeth Oliphant (Central New Mexico Community College)

4:40 – 6:00 PM
San Rafael

P83. Studying C19 Black and Indigenous Studying

Chair: Crystal Donkor (SUNY New Paltz)

Between the Disciplines: Race and the Modern University

Hannah Wells (Drew University)

Avoiding Excitements: Black Medicine and the Institutions of Respectability

Natalia Cecire (University of Sussex)

Why Samson Occom’s “Arithmetic Must Fail”

Molly Farrell (Ohio State University)

Data and the End of Slavery: William Wells Brown as Data Scientist

Edward Whitley (Lehigh University)

4:40 – 6:00 PM
Leishman

P84. Archival Remains

Chair: Matthew Suazo (Kenyon College)

Hugh Mangum’s Pet Projects

Brenna Casey (University of Massachusetts Amherst)

Index of Participants

A		Barnes, Mollie	P78
Adams, Jeffrey	P26	Barnes, Ashley	P10, P82
Adams, Kate	P3	Barrett, Faith	P28
Albanese, Mary Grace	S7, P22, P37	Barton, John	P25
Altschuler, Sari	S2, P60	Bary, Leslie	P41
Anderson, Alex	P56	Bascom, Benjamin	P32
Anthony, Kristen	P12	Batra, Ajay	S9, P64
Anthony, Cora	P28	Beam, Dorri	S6
Apple, Elizabet	S8	Becker, Leah	P61
Aranda, José	P66	Bennett, Bridget	P52
Arbour, Robert	P36	Bentley, Nancy	P35
Ashland, Alexander	P41	Bergh, Rio	P39
Ashton, Susanna	P64	Beringer, Alex	P6
Aycock, Rebekah	P70	Bernadini, Caterina	P31
B		Bernstein, Robin	P5
Babb, Valerie	P59	Bilbija, Marina	P55, P72
Badley, Chip	S5, P18	Bishop, Andrew	S2, P22
Bainbridge, Danielle	P47	Bjornson, Eric	P7
Ball, Molly	P84	Blackwood, Sarah	P23, W1
Banta, Emily	P14	Blanc, Marc	S10



Los Angeles Plaza, ca. 1858. Courtesy of UCLA Library Digital Collections.

Blanks, Kevin	S9	Coleman, Dawn	P10
Blum, Hester	P51	Colonnese, Francesca	W2
Bode, Rita	P38	Connolly, Brian	S5, P73
Boger, Klara	S3, P71	Constantinesco, Thomas	P30
Bolten, Rachel	S6	Conway, Joe	P25
Boone, Joseph Allen	P18	Coronado, Raúl	P81
Bouchelaghem, Aïcha	P75	Couch, Daniel	P74, P85
Boutelle, RJ	P63	Coviello, Peter	S5, S8
Bramen, Carrie	P16, P53	Curseen, Allison	P58
Brandt, David		D	
Braun, Juliane	P50	Daniels-Rauterkus, Melissa	P46
Brickhouse, Anna	S4	Dauer, Julia	P24, P49
Bronson-Bartlett, Blake	P31	Davis, Theo	P58
Brown, Rachel	S6	Davoudi, Dalia	S6
Broyld, dann j.	S7	De Galzain, Alice	P13
Brueck, Laura	P20	DeLombard, Jeannine	P60
Bruno, Tim	P76	de Stefano, Jason	P1
Bryant, Joan	P53	Dean, Eagan	P43, W2
Buckner, Sarah	S6	Delchamps, Vivian	P19
Bunce, Lauren	P54	Dellenbaugh-Dempsey, Jareka	S8
Burgher, Denise	P79	Dev Roy, Shaibal	S8, P50
Bushman, Brandi	P17, P77	DeWitt, Rachael	S8, P21
Byers, Sheila	P22	Dietrich, Rene	P59
C		Dinius, Marcy	P23
Cadle, Nathaniel	P38	Diran, Ingrid	P58
Cantalamessa, Elizabeth	P29	Donahue, Timothy	P29
Carpenter, Sam	P86	Donkor, Crystal	P83
Casey, Brenna	P84	Donnelly, Andrew	P4
Casey, Jim	S10, P9	Doty, Josh	P42
Castronovo, Russ	S4, P60	Downes, Paul	P11
Cavitch, Max	P69	Duquette, Elizabeth	P38, P46
Cecire, Natalia	P83	Dworkin, Ira	P55
Chacon, Heather	S2, P30	Dzyak, Katrina	S6
Chandler, Justin	S7, P34	E	
Chapman, Schuyler	P82	Eaton, Mark	P40
Chapnick, Max	S5, P21, W2	Eckel, Leslie	P5, P13
Chiles, Katherine	P53	Edelstein, Sari	P48
Chinn, Sarah	P30, P54	Elkaim, Jessica	P10
Chowdhury, Rowshan	S4, P13	Ellefson, Philip	P70
Chun, Philippa	P49	Elliott, Clare	P52
Church, Luke	P75	Ellis, Cristin	S2
Clark, Will	P74	Elmer, Jonathan	P10
Coats, Lauren	S4	Emerson, D. Berton	P76
Coghlan, J. Michelle	S10, P57	Ensor, Sarah	S8
Cohen, Lara	P65	Erickson, Paul	S1, P56
Cohen, Michael	P60	Erlandson, Andrew	S2
Cole, Jean Lee	S10, P6	Ernest, John	P59

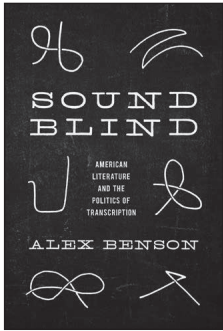
Eure, Eve	S7	Guevara, Gema	P47
Everton, Michael	P15	Gunning, Sandra	P65
Ewing, Annemarie	S7, P44	Gustafson, Sandra	P15
Exner, Eike	P6	H	
F		Habib, Mushira	W2
Fabi, M. Giulia	S7, P77	Haddaway, Rebecca	P36
Factor, Jennifer	S6	Hainze, Emily	P33
Faherty, Duncan	P79	Hankins, Laurel	P14
Fales, Adam	P18	Hanlon, Christopher	S10
Farbman, Dan	P80	Harris, Allison	P40
Farmer, Meredith	P57	Harris, Leslie	P5
Farrell, Molly	P83	Harris, Elisabeth	P13
Feiz, Manzar	P13	Hawkes, DeLisa	S7, P40
Fielder, Brigitte	P63	Hay, John	S8, P16
Fishkin, Shelley	P38	Heintz, Ren	P60
Flores, Sara	S3, P16	Helwig, Tim	P54
Fluker, Amy	P67	Henningsen, Kadin	P30, P62
Foley, Tara	P70	Hernández, Bernadine	P66
Foote, Stephanie	P51, P61	Hickman, Jared	P57
Foreman, P. Gabrielle	P9	Hines, Alisha	P55, P84
Foster, Travis	P43	Hiro, Molly	P57
Fraser, Gordon	P39	Holt, Keri	P17, P45
Friedlander, Benjamin	P42	Hooper, M. Clay	P3
Fulton, Allison	P24	Hopwood, Elizabeth	P54
Funchion, John	P73	Horvath Williams, Jessica	S2, P48
G		Horwitz, Howard	P34, P80
Gallagher, Mark	P1	Howard, Thomas	S1, P85
Garcia, John	P7	Huber, Kate	P40
García, E. Mar	P66	Hudson, Renee	P59
Garnier, Christine	P11	Huerta, Monica	S6
Gelmi, Caroline	P42	Hughes, Amy E.	S6
Gersie, Jenna	P1	Hunt, Bill	P62
Gillman, Susan	P20, P29	Hurh, Paul	P58
Gniadek, Melissa	P61	Hurley, Nat	S5, P18
Godley, James	S5	Hyde, Carrie	P14, P70
Goldberg, Jess	S7, P75	I	
Goldberg, Shari	S2	Insko, Jeffrey	P11
Gordon, Sean	P42	Ishikawa, Maria	P85
Gordon Ginzburg, Etti	P62	J	
Gore, Amy	P39	Jackson, Virginia	P8
Goyal, Yogita	P20	Jacobs, Aaron	P68
Greathouse, Corey	P25	Jakobsen, Hannah	P81
Greiman, Jennifer	P14	James, Jennifer	P15, P61
Gronningsater, Sarah	P5	Jao, Charline	P37
Grossman, Jay	P21	Jaros, Peter	S6, P23
Grubbs, Lindsey	S2, P19	Jo, Hai In	S7
Gruber Garvey, Ellen	S10, P67	Johnson, Amanda Louise	P67

Johnson, Andre E.	P9	Lu, Stephanie	S4
Jones, Paul	P54	Luciano, Dana	S5, P18
Joseph, Nick	P85	Lutes, Jean	P79
Juarez, Miriam	S1	Lyons, Sam	S1
Juster, Susan	S1	M	
K		Madera, Judith	P65
Kane, Maria	P32	Mailloux, Steven	P16
Kasane, Yui	P50	Mansouri, Leila	S3
Katopodis, Christina	P13, P45	Marcus, Sara	P33
Kazanjian, David	P20	Margolis, Stacey	P58
Khan, Almas	P86	Martin, Alice	S10, P27
Kim, Yoonsuh	S2, P7	Mazzaferro, Alex	P37
Kindig, Patrick	S2	McCall, Sri	P21
King, Grace,	P18	McCourt, Alexandra	P77
Kirsch, Geoffrey	P80	McCurdy, Melinda	P12
Klimasmith, Betsy	P26	McDaneld, Jen	P57
Knight, Alisha	P55	McDonald, Tenisha	P75
Konkle, Maureen	P45	McDonald, Patrick	P10
Kopec, Andrew	P61	McGill, Meredith	P42
Kreitz, Kelley	S10	McGunigal, Lisa	S1, P24
Kuhn, Mary	S2	McKee, Kathryn	P4
Kunde, Sharon	P69	McKnight, Utz	P77
Kupfner, Mariah	P34	McLaughlin, Don James	P32
L		McMillan, Uri	P47
Laski, Gregory	P60	McMullen, Kevin	P31
LaFleur, Greta	P32	McQueen, Kelsey	P36
Lam, Joshua	P3	Mendelman, Lisa	S2, P7
Lamas, Carmen	P66	Merish, Lori	S4, P70
Larkin, Ilana	S9, P86	Mesle, Sarah	P81
Laski, Gregory	S6, P60	Michelon, Christina	P49
Laudig, Mélena	S9, P53	Mielke, Laura	P15
Lazo, Rodrigo	P15	Mitchell, Karah	P71
Lee, Julia H.	S3	Michell, Koritha	P68
Lee, Kirsten	P78	Modestino, Kevin	S5
Lee, Maurice	P1	Monahan, Sara Jane	P26
Lee, Jeong Yeon	P2	Montgomery, Carlee	P36
Levi Barnard, John	P61	Morgan, Tom	P40
Levine, Robert P15,	P46	Morgan, Patrick	S8, P26
Libow, Jess P22,	P79	Moriarty, Sammy	S6, P3
Ling, Michelle	S3, W2	Moskowitz, Alex	P74, P85
Little, Ariel	P45	Mukherjee, Adrita	P50
Locke, Brandi	P77	Mullaney, Clare	S10, P19
Logan, April	P28	Mullen, Lawrence Lorraine	P62, W2
Londe, Gregory	P8	Mulvihill, Emily	P35
Lopez, Efren	P74	Murison, Justine	P30, P46
López, Marissa K.	S3	Murphy, Dana	P81
Lowery, Tabitha	P67	Murray, Courtney	P25, P75

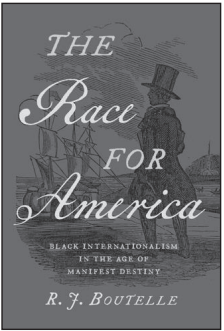
Musselman, Nicole	P77	Robertson, Isaac	P2
Myers, Daniel	P71	Robinson, Morgan A.	P9
N		Rodelo, Christofer	S3, P47
		Rogers, Trinity	P79
Nance, Sarah	P19	Rosen, Rebecca	P24, P49
Narvaez, Auréliane	P10	Ross, Kelly	S10, P64
Navakas, Michele Currie	P12	Roudeau, Cécile	P52
Neary, Janet P33		Roylance, Patricia	S8
Neely, Michelle	S8, P11	Rusert, Britt	P43
Nelson, Charmaine	P5	Ryan, Susan	P64
Newfield, Christopher	P23	S	
Nielsen, Karla Ann Merino	P12		
Noble, Mark	S10, P1	Salter, Sarah H.	S10
Nurhussein, Nadia	P8	Samuels, Shirley	P29
O		Sanchez, Maria	P78
		Sánchez-Eppler, Karen	S9, P62
Oliphant, Elizabeth	P82	Sanderfer Doss, Selena	P9
Olley, Madeline	P13	Sanders, Jorden	P35
Orr, Ittai	P45	Santamarina, Xiomara	P46
Owens, Camille	P47	Sarma, Rudrani	P35
P		Schmidt, Alexis	P11
		Schneider, Carie	P82
Pantoja, Timothy	S9, P2	Schöberlein, Stefan	P14, P31
Parra, Jamie Luis	P29	Schoolman, Martha	P73
Patterson, Cynthia	P27	Schroeder, Jonathan	P72
Pearson, Erin	P80	Seger, Maria	P68
Pérez, Vincent	P17	Seitler, Dana	P18
Persons, Annie	P26	Seybold, Matt	P23, P29
Pethers, Matthew	S10, P76	Shahi, Kimia	P65
Pfaelzer, Jean	P59	Sharpless, Susannah	P69
Pingler, Marina	S7, P55	Shelnutt, Blevin	P35, P41
Pirli, Alp Eren	P14	Sheridan, Andie	P18
Pitts, Phillippa	P6	Sherrard-Johnson, Cherene	P30, P44
Plaue, Ethan	P8	Sillin, Sarah	P43
Pledger, Jené	P74	Silva Gruesz, Kirsten	P20
Pokross, Benjamin	P21	Sinche, Bryan	P72
Pottroff, Christy	P58	Singer, Kate	P43
Price, Kenneth M.	P31	Sizemore, Michelle	P14
Prior, David	P4	Smith, Hampton	P37
Putzi, Jennifer	P78	Smith, Mary-Antoinette	P38
R		Smith, Alonzo	P25
		Sobelle, Stefanie	P51
Rattner, Ashley W2		Socarides, Alexandra	P57
Rebhorn, Matthew	P30	Soderberg, Laura	S9, P79
Reckson, Lindsay	P33	Solis, Sammy	P74
Reed, Ashley	S1, P67	Sommers, Sam	S9, P79
Reilly, Bridget	S2	Soto, Evelyn	P66
Rezek, Joseph	P15, W1	Spires, Derrick	P63
Ridgway, Frank	P51		
Robbins, Hollis	P51		
Robbins, Sarah	P72		

Stein, Jordan	P18, P57	Whitley, Marlas Yvonne	P77
Steinhafel, Matt	P34	Whitley, Edward	P83
Stevens, Erica	P28	Wigginton, Caroline	S7, P8
Stewart, Victoria	S2	Williams, Nathaniel	P34
Stokes, Claudia	P46	Williamson, Jordan	P41
Stokes, Mikala	P63	Williamson, Clinton	P76
Strouth-Gaul, Theresa	P78	Wilson, Ivy	P20
Suazo, Matthew	P84	Windell, Maria	P48, P66
Sweeney, Fionnghuala		Witek, Darby	P63
Sy, Lloyd	P39	Woertendyke, Gretchen	P23
Syvertsen, Adam	S7, P86	Womack, Autumn	P33
T		Wong, Edlie	P44
		Woo, Jewon	S9, P63
Tackett, Justin	P8	Wood, Gillian	P72
Takahata, Kimberly	P49	Worthy II, Jimmy	P16
Tavlin, Zachary	P69	Wright, Nazera Sadiq	S9
Taylor, Matthew	P68	Y	
Teriba, Adedoyin	P55		
Thomas, Brook	P4	Yahr, Jayme	P27
Thompson, Graham	P27	Yao, Xine	P60
Thrailkill, Jane	P7	Yang, Caroline	P71
Tigchelaar, Jana	P56	Yoon, Ami	P21, P42
Toh, Eunice	P17	Young, Elizabeth	P24
Tomc, Sandra	P27	Younts, Will	P34
Tompkins, Kyla Wazana	S6	Yu, Hyunjoo	P77
Torrance, Justina	S4	Yusaf, Shundana	P65
Totten, Gary	P17	Z	
Traister, Bryce	P43		
Tricker, Spencer	S3, P50	Zapędowska, Magdalena	S10, P41
Tronrud, Wendy	P23, P69	Zehnder, Madeline	S9, P36
Turpin, Zachary	S10	Zellinger, Elissa	P28
Tuttle, Jennifer	P51	Zibrak, Arielle	P48
V		Zumbro, Emma	P17
Valenzuela, Gabriela	S3		
Vogelius, Christa	P3		
von Morze, Len	P86		
W			
Wagner-McCoy, Sarah	P72		
Wakefield, Hannah	S6		
Walker, Rachel	P32		
Walkiewicz, Katie	S7, P60		
Wallace, Maurice	P30		
Wallitsch, Lucy	S2, P56		
Wardley, Lynn	S2, P22		
Warren, Noah	S8		
Washington, Jr., Henry	P29		
Webster, Crystal Lynn	S9, P5		
Wells, Hannah	P83		

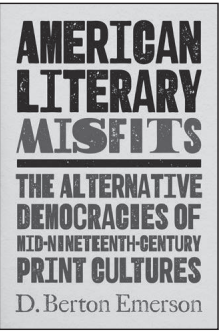
NEW FROM UNC PRESS



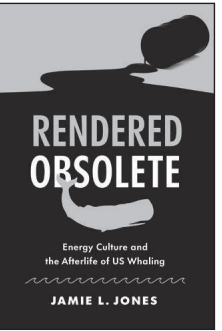
Sound-Blind
American Literature and the Politics of Transcription
Alex Benson
260 pages \$34.95 paper



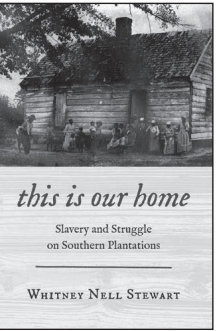
The Race for America
Black Internationalism in the Age of Manifest Destiny
R. J. Boutelle
286 pages \$34.95 paper



American Literary Misfits
The Alternative Democracies of Mid-Nineteenth-Century Print Cultures
D. Berton Emerson
250 pages \$39.95 paper



Rendered Obsolete
Energy Culture and the Afterlife of US Whaling
Jamie L. Jones
262 pages \$29.95 paper



This Is Our Home
Slavery and Struggle on Southern Plantations
Whitney Nell Stewart
296 pages \$29.95 paper

Agrotopias
An American Literary History of Sustainability
Abby L. Goode
294 pages \$34.95 paper

The Rich Earth between Us
The Intimate Grounds of Race and Sexuality in the Atlantic World, 1770–1840
Shelby Johnson
230 pages \$32.95 paper

What Jane Knew
Anishinaabe Stories and American Imperialism, 1815–1845
Maureen Konkle
442 pages \$29.95 paper

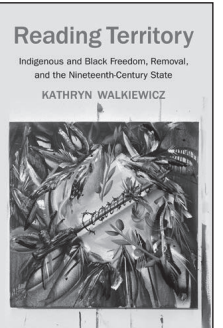
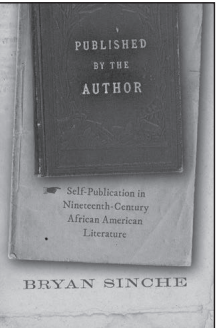
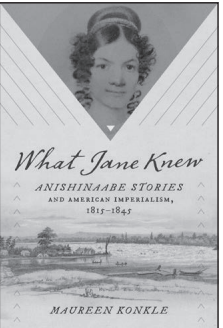
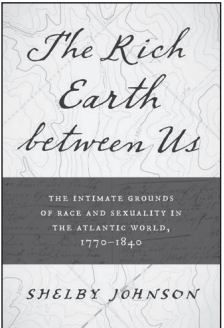
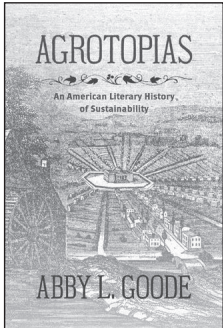
Published by the Author
Self-Publication in Nineteenth-Century African American Literature
Bryan Sinche
288 pages \$34.95 paper

Reading Territory
Indigenous and Black Freedom, Removal, and the Nineteenth-Century State
Kathryn Walkiewicz
314 pages \$32.95 paper

Indigenuity
Native Craftwork and the Art of American Literatures
Caroline Wigginton
328 pages \$32.95 paper

Save 40% on all UNC Press books.
Visit www.uncpress.org and use promo code **01DAH40** at checkout.
You'll save 40%, and get free U.S. shipping on orders of \$75 or more.
Offer Expires April 30, 2024.

@BOOK Most UNC Press books are also available as E-Books.



THE UNIVERSITY OF NORTH CAROLINA PRESS
at bookstores or 800-848-6224 • uncpress.org • uncpressblog.com

FUNDED RESEARCH OPPORTUNITY



clements.umich.edu



APPLY FOR A 2025-26 RESEARCH FELLOWSHIP!

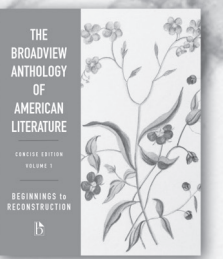
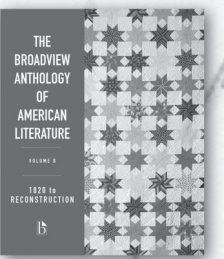
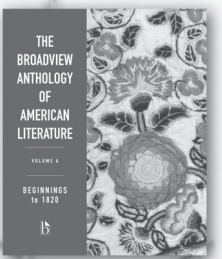
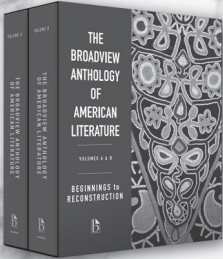
- ✓ Long Term Fellowships
- ✓ Short Term Fellowships
- ✓ Week Long Fellowships
- ✓ Digital/Remote Fellowships

DEADLINE JAN. 15, 2025



WILLIAM L. CLEMENTS LIBRARY
UNIVERSITY OF MICHIGAN

THE BROADVIEW ANTHOLOGY OF AMERICAN LITERATURE



“... quite simply, a breakthrough ... the new gold standard ...”
— Michael D'Alessandro, Duke University

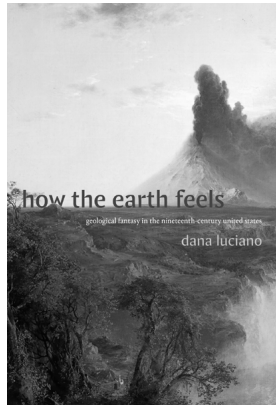
“... a literary anthology for a new generation ...”
— Hester Blum, Pennsylvania State University



learn more

BROADVIEWPRESS.COM
@BROADVIEWPRESS

New books from Duke University Press



How the Earth Feels
Geological Fantasy in the Nineteenth-Century United States
DANA LUCIANO
ANIMA: Critical Race Studies Otherwise

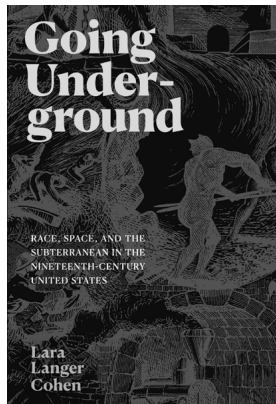


Going Underground
Race, Space, and the Subterranean in the Nineteenth-Century United States
LARA LANGER COHEN

Immeasurable Weather
Meteorological Data and Settler Colonialism from 1820 to Hurricane Sandy
SARA J. GROSSMAN
Elements

The Briny South
Displacement and Sentiment in the Indian Ocean World
NIENKE BOER
Theory in Forms

Marx for Cats
A Radical Bestiary
LEIGH LA BERGE



The Politics of Kinship
Race, Family, Governance
MARK RIFKIN

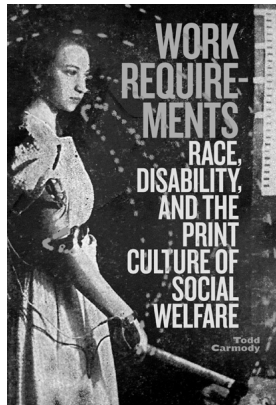
Work Requirements
Race, Disability, and the Print Culture of Social Welfare
TODD CARMODY

Intoxicated
Race, Disability, and Chemical Intimacy across Empire
MEL Y. CHEN
ANIMA: Critical Race Studies Otherwise

Police and the Empire City
Race and the Origins of Modern Policing in New York
MATTHEW GUARIGLIA

Bad Education
Why Queer Theory Teaches Us Nothing
LEE EDELMAN
Theory Q

On the Inconvenience of Other People
LAUREN BERLANT
Writing Matters!



dukeupress.edu

DUKE

UNIVERSITY
PRESS

C19

The Society of
Nineteenth-Century
Americanists

c19society.org